



On-line PICASSO PROJECT

**Comprehensive Catalogue Raisonné
Prof. Dr. Enrique Mallen**

1938

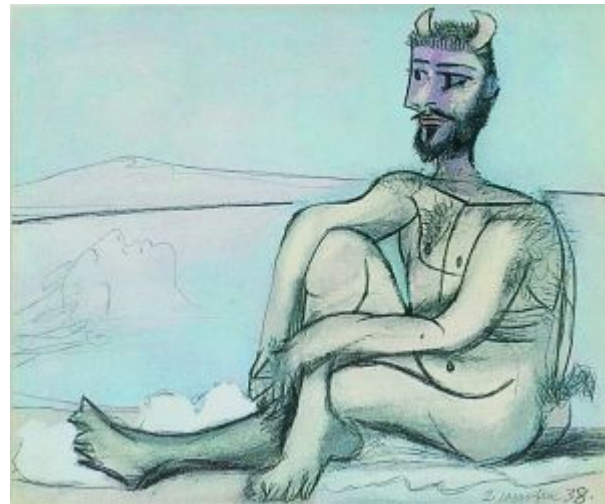


Minotaure blessé et Nàïade. [Paris]. 1-January/1938. Oil & charcoal on canvas. 46 x 55 cm. Maya Widmaier Picasso Collection, Paris.

OPP.38:018; P.IV:1092; PP.38:001; DD.61:142p; GG.87:56p; RP.11*:219p; UP.00:791

Faune assis. [Paris]. 2-January/1938. Oil, pencil & charcoal on canvas. 50 x 61 cm. The Picasso Estate.

OPP.38:017; P.IV:1093; PP.38:002; DD.61:143p; UP.00:793





Buste de femme dans une chambre rouge et violette.

Paris. 7-January/1938. Oil on canvas. 61 x 46 cm. Sotheby's. #127, NY7379, 11/11/99.

OPP.38:083; P.IV:1103; PP.38:005; DD.61:229; MS.04:18p; NY.83e*:n/a; PA.80a*:19; RH.82*:43; RH.93a*:n/a; RH.96a*:n/a; TT.81*:n/a; UP.00:804

Deux faunes et nu. Paris. 7-January/1938. Oil on canvas. 50 x 61 cm. Fundación Almine & Bernard Ruiz-Picasso para el Arte. (Inv 12823).

OPP.38:098; P.IV:1100; PP.38:004; CP.95:176p; DD.61:228p; PA.20j*:151





Deux faunes et nu. Paris. 7-January/1938. Oil & charcoal on canvas. 46 x 55 cm. Fundación Almine & Bernard Ruiz-Picasso para el Arte.

OPP.38:147; P.IV:1101; PP.38:003; DD.61:228p; DP.20:248p; MG.18*:71p

Femme aux mains jointes (Marie-Thérèse). [Le Tremblay-sur-Mauldre]. 8-January/1938. Pencil, charcoal & oil wash on canvas. 81,3 x 61 cm. Mr. and Mrs. J. Tomilson Hill Collection. Formerly Mr. & Mrs. Marshall Cogan Collection; Marina Picasso Collection. (Inv 12826).

OPP.38:022; P.IV:1104; PP.38:006; CG.12*:65; DD.61:229; EC.16*:123; MP.81*:197; NY.21g*:52; RP.11*:235p; WR.96:372p





Portrait de femme au chapeau. [Le Tremblay-sur-Mauldre]. 8-January/1938. Oil & charcoal on canvas [OIC]. 55 x 38 cm. Private collection.

OPP.38:115; P.IV:1102; PP.38:007; DD.61:229p

Marie-Thérèse (avec chapeau rouge). [Le Tremblay-sur-Mauldre]. 9-January/1938. [Pastel] Oil & pencil on canvas. 46 x 38 cm. The Picasso Estate.

OPP.38:016; P.IV:1110; PP.38:009; DD.61:145p; RP.11*:234p





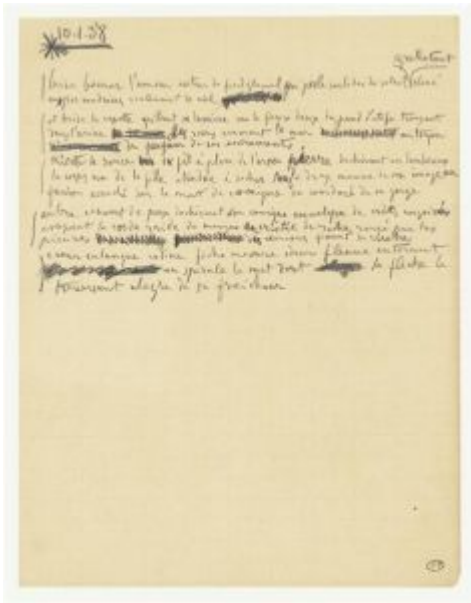
Portrait de femme au chapeau. [Le Tremblay-sur-Mauldre]. 09-January/1938. Pencil on canvas. 46 x 38 cm. Private collection.

OPP.38:116; PP.38:008; DD.61:229p

laisse au printemps ... (1) (2). Paris. 10-January/1938. Graphite in beige squared paper. [27,8 x 21,7] 27,1 x 21,1 cm. Musée Picasso, Paris. Dation 1979.

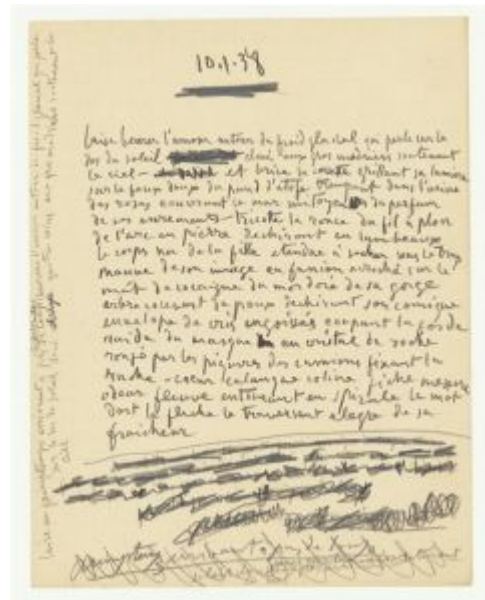
OPP.38:235; MPP:3663.224r; MPP:3663.25r; AM.08:295p; CW.89:411p; PP.19:136p





laisse au printemps ... (3). Paris. 10-January/1938.
Graphite in beige squared paper. 27 x 21 cm. Musée Picasso, Paris.

OPP.38:236; MPP:3663.226r; AM.08:296p; CW.89:411p



laisse au printemps ... (4). Paris. 10-January/1938.
Graphite in beige squared paper. 27 x 20,9 cm. Musée Picasso, Paris.

OPP.38:237; MPP:3663.228r; AM.08:297p;
CW.89:411p



laisse au printemps ... (5). Paris. 10-January/1938.
Graphite on squared paper. 27 x 21 cm. Musée Picasso, Paris.
Dation 1979.

OPP.38:238; MPP:3663.222r; AM.08:298p; CW.89:411p;
PP.19:66p

entouré par les dents ... (2); laisse au printemps ... (6).
Paris. 10-January, 6-February/1938. India ink on Arches
paper. S/U. Musée Picasso, Paris.

OPP.38:249; AM.08:299p





entouré par les dents ... (2); aisse au printemps ... (6). Paris. 6-February, 10-January/1938. Pen & India ink on paper. 26 x 17,5 cm. Musée Picasso, Paris.

OPP.38:358; MPP:3663.234r

laise au printemps arrivant Paris. 10-January/1938. Typescript on paper. 27,1 x 21,1 cm. Musée Picasso, Paris.

OPP.38:315; MPP:3663.223r





laisse beurer l'amour autour du froid glacial qui perle
..... Paris. 10-January/1938. Typescript on paper. 27 x 21 cm.
Musée Picasso, Paris.

OPP.38:316; MPP:3663.225r



laisse beurer l'amour autour du froid glacial qui perle
..... Paris. 10-January/1938. Typescript on paper. 27,2 x 21,1 cm. Musée Picasso, Paris.

OPP.38:317; MPP:3663.227r



laisse beurer l'amour autour du froid glacial qui perle ...
Paris. 10-January/1938. Typescript on paper. 27,2 x 21,1 cm.
Musée Picasso, Paris.

OPP.38:318; MPP:3663.229r

Femme à la résille. Paris. 12-January/1938. Oil on canvas. 65,1 x 54 cm. Christie's. #15A, 3739, 05/11/15. Formerly Jan and Marie-Anne Krugier-Poniatowski Collection; Marina Picasso Collection. (Inv 12829).

OPP.38:059; P.IV:1105; PP.38:010; Z.IX:119;
DD.61:229p; JR.88*:107p; MB.84*:122;
MP.81*:198; MP.83*:157; MP.85:12829; UP.00:802;
VE.81*:240; WR.96*:393p; WW.94*:135





Portrait de femme (Marie-Thérèse Walter). [Le Tremblay-sur-Mauldre]. 14-January/1938. Oil on canvas. 46 x 38 cm. Sotheby's. #11, N10778, 10/23/21. Formerly The Bellagio Gallery of Fine Art, Las Vegas.

OPP.38:076; P.IV:1108; PP.38:011; BG.99:140p; DC.61:229; LP.99:157p

gangrène de l'ombre ... (1). Paris. 14-January/1938. Pen & India ink on paper. 25,5 x 17,4 cm. Musée Picasso, Paris.

OPP.38:343; MPP:3663.230





gangrene de l'ombre ...; collés aux lèvres serrés
Paris. 14-January/1938. Typescript on paper. 27,1 x 21 cm.
Musée Picasso, Paris.

OPP.38:319; MPP:3663.231.01r

gangrene de l'ombre ...; collés aux lèvres serrés
.... Paris. 14-January/1938. Typescript on paper. 27,1
x 21 cm. Musée Picasso, Paris.

OPP.38:320; MPP:3663.231.03r





Portrait de femme aux mains croisées (Marie-Thérèse Walter). [Le Tremblay-sur-Mauldre]. 15-January/1938. Oil on canvas [OïC]. 73 x 54 cm. Private collection.

OPP.38:148; P.IV:1107; PP.38:012; DD.61:229p

Tête de femme au chapeau (Marie-Thérèse). [Le Tremblay-sur-Mauldre]. 15-January/1938. Oil on canvas. 46 x 38 cm. The Hirshhorn Museum and Sculpture Garden, Smithsonian Institution, Washington, DC. (Inv 66.4042). Gift of Joseph H. Hirshhorn, 1966.

OPP.38:149; P.IV:1106; PP.38:013; DD.61:229p; VO.16*:77p; YB.08*:74





Tête de femme au béret. [Le Tremblay-sur-Mauldre]. 15-January/1938. Oil on canvas. [46 x 38] 46,3 x 38,1 cm. The Museum of Modern Art, NYC. Gift of Jacqueline Roque Picasso in honor of the Museum's continuous commitment to Pablo Picasso's art, 1985.

OPP.38:150; P.IV:1109; PP.38:014; DD.61:230p; WR.12a:103

Maya à la poupée. [Le Tremblay-sur-Mauldre]. 16-January/1938. Oil on canvas. 73,5 x 60 cm. Musée Picasso, Paris. Dation 1979.

OPP.38:005; MPP:170; P.IV:1097; PP.38:015; Z.IX:99; BS.55:245p; DD.61:230p; DT.78:65; GB.87:149; GC.96:234p; GD.77:70p; GP.96:229p; HK.65:117p; IS.98:101p; JC.69:28; JM.93:93p; JR.21:n/p; LB.58:84p; LP.99:158p; MA.08a*:n/a; ME.82a*:83; MI.53*:80; MJ.55*:92; MM.67:46; MN.80*:n/a; MP.85:148; OD.96:68p; PA.79a*:270; PC.77:312p; PD.65:174p; PE.17*:133p; PM.91:58p; RB.99:29p; RP.60*:151; RP.67a:23; RP.81:16.7; RS.88:130p; SD.05*:77; VB.99:50p; WR.96:374p; WS.94:81p; WS.95a*:114; WW.91:425p





Les trois Grâces couronnées de fleurs. Paris. 18-January/1938. Etching on Arches laid paper, edition 50. 30,8 x 20,7 cm. Christie's. #247, 6608, 07/03/02.

OPP.38:032; B.I:303; Ba:631.3CB1; AB.06*:139

Les trois Grâces couronnées de fleurs (III). Paris. 18-January/1938. Etching on Montal Vergé paper. 30,7 x 20,5 cm. Musée Picasso, Paris. Dation 1979.

OPP.38:302; Ba:631.3; MPP:2777





Les trois grâces couronnées de fleurs. Paris. 18-January/1938. Etching on Montval laid paper with Vollard watermark (lay down on Arches wove paper). 30,7 x 20,5 cm. Collection EB, New York.

OPP.38:368; Ba:631.3.Ab

Femme et enfant enlacés (Marie-Thérèse et Maya). [Le Tremblay-sur-Mauldre]. 22-January/1938. Oil on canvas. 65 x 54 cm. Marina Picasso Collection. (Inv 12835). Courtesy Galerie Jan Krugier, Geneva.

OPP.38:015; P.IV:1114; PP.38:017; DD.61:146p; DF.10:67p; HN.00*:8; MP.81*:199; WR.96:375p; WS.95a*:106





Maya au cheval et à la poupée. [Le Tremblay-sur-Mauldre]. 22-January/1938. Oil on canvas. 73 x 60 cm. Diana Widmaier-Picasso Collection. (Inv 12834). Formerly Maya Widmaier Picasso Collection.

OPP.38:025; P.IV:1095; PP.38:016; Z.IX:101; AB.46:212p; AS.60:52; CP.95:63p; HN.00*:7; JL.71:19p; ME.82*:92p; OW.02:12; OW.03:12; OW.04:12; OW.13:170p; RP.11*:249p; WR.80*:354p; WS.95a*:114

Le chasseur de papillons (Maya). [Le Tremblay-sur-Mauldre]. [2-April] 23-January/1938. Oil on canvas. 121,6 x 86,3 cm. The Museum of Modern Art, NYC. Gift of Jacqueline Roque Picasso in honor of the Museum's continuous commitment to Pablo Picasso's art, 1985.

OPP.38:027; P.IV:1112; PP.38:055; Z.IX:104; AB.46:216p; CP.95:25p; EC.16*:133; JR.21:172p; PB.21:149; SG.88:193p; UP.00:797; VK.97*:113p; WR.12a:104; WR.96:377; WR.96:377p; WS.94:77p; WS.95a*:115





Tête de femme au chapeau de paille sur fond rose. [Le Tremblay-sur-Mauldre]. 23-January/1938. Oil on canvas. 63,5 x 48,9 cm. Private collection.

OPP.38:132; P.IV:1111; PP.38:018; DD.61:230p;
SD.13a*:167

Croquis sur une enveloppe adressée à Dora Maar. Paris. 23-January/1938. Graphite on paper [Reverse of *Croquis sur une enveloppe adressée à Dora Maar*]. 12,3 x 15,2 cm. Musée Picasso, Paris.

OPP.38:371; MPP:1998.75v





Croquis sur une enveloppe adressée à Dora Maar. Paris. 23-January/1938. Graphite pencil on paper [Obverse of *Croquis sur une enveloppe adressée à Dora Maar*]. 12,3 x 15,2 cm. Musée Picasso, Paris.

OPP.38:372; MPP:1998.75r

Femme assise dans un fauteuil. Paris. 25-January/1938. Pencil on squared paper. 30 x 21 cm. Sotheby's. #2, N08587, 11/04/09. Formerly Marina Picasso Collection. (Inv 03961).

OPP.38:117; P.IV:1118; PP.38:019; MP.81*:194; NY.98b*:10





Maya au bateau. [Le Tremblay-sur-Mauldre]. 28-January/1938. Oil on canvas. [65 x 50] [65,4 x 50,2] 65,1 x 49,5 cm. Sotheby's. #1A, HK0778A, 03/16-31/18.

OPP.38:118; P.IV:1096; PP.38:020; Z.IX:100; DD.61:230p; NY.04e*:n/a; PA.44a*:n/a; RH.05*:n/a; RP.11*:247p

Nature morte: verre et compotier aux fruits. [Le Tremblay-sur-Mauldre]. 29-January/1938. Oil on canvas. 34 x 46 cm. Sotheby's. #125, N11161, 11/14/23. Formerly Galería Leandro Navarro, Madrid.

OPP.38:151; PP.38:021; Z.IX:102; LO.39b*:26; NY.08c*:22; PA.39a*:28





Maya au bateau. [Le Tremblay-sur-Mauldre]. 30-January/1938. Oil on canvas. 61 x 46 cm. Museum Sammlung Rosengart, Luzern. Siegfried & Angela Rosengart Collection.

OPP.38:006; P.IV:1094; PP.38:022; DD.61:147p; IW.93:71p; UP.00:796; WS.93*:28; WS.94:80p; WS.95a*:112; WW.91:424p

Nature morte à la pomme. [Le Tremblay-sur-Mauldre]. 30-January/1938. Oil on canvas. 19 x 27 cm. Private collection.

OPP.38:108; PP.38:023; DD.61:230p





Nature morte au pichet et à la figure. Le Tremblay-sur-Mauldre. 19-February/1938. Oil on canvas [OiC]. [19 x 24] 22 x 29 cm. Maya Widmaier Picasso Collection, Paris.

OPP.38:157; PP.38:033a; JB.92:250p

Portrait de Dora Maar. Paris. [January~] February/1938. Pencil on paper mounted on fiberboard. 77,5 x 57 cm. The Hirshhorn Museum and Sculpture Garden, Smithsonian Institution, Washington, DC. (Inv 66.4043). Joseph. H. Hirschhorn Bequest, 1966.

OPP.38:284; YB.08*:75





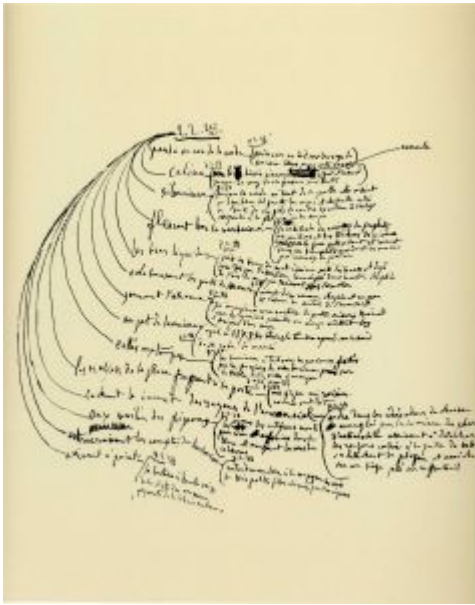
Dora Maar assise. Paris. 2-February/1938. Pastel, India ink & graphite pencil on cardboard. 27 x 21,9 cm. Musée Picasso, Paris. Dation 1979.

OPP.38:021; MPP:1201; P.IV:1115; PP.38:024; Z.IX:118; AB.06*:132; EC.02:586; EM.55:196p; GP.96:242p; GT.81*:83; MA.08a*:n/a; MA.08a*:n/a; MB.06*:n/a; ME.82a*:84; ND.01*:78; OW.13:77p; PA.79a*:534; RD.00*:119; TK.04*:n/a; UP.00:806; WR.80*:22; WS.86:178; WS.93*:30

pendu au cou de la corde ... (1). Paris. 2-February/1938. Graphite on white paper. 29,5 x 20,9 cm. Musée Picasso, Paris.

OPP.38:301; MPP:3663.232r





pendu au cou de la corde ... (3). Paris. 2~7-February/1938. Ink. S/U. Musée Picasso, Paris.

OPP.38:137; AB.05a:94; CW.89:181p



pendu au cou de la corde ... (2). Paris. 2~7-February/1938. India ink. S/U. Musée Picasso, Paris.

OPP.38:239; CW.89:413p



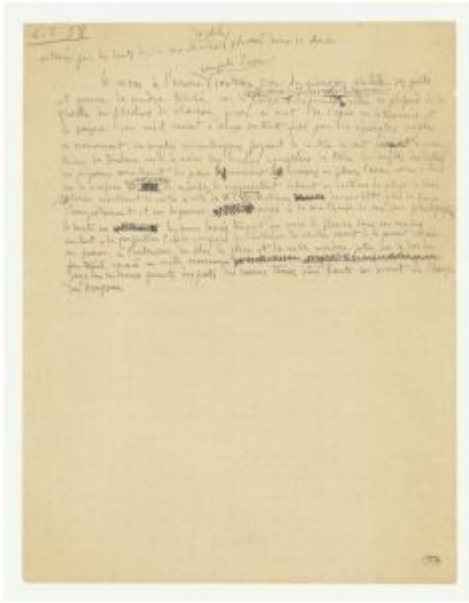
Fille au bateau (Maya). [Le Tremblay-sur-Mauldre]. 4-February/1938. Oil on canvas. 73 x 60,4 cm. Sotheby's. #108, L23002, 03/01/23. Formerly Sotheby's. #18, L09109, 12/07/99.

OPP.38:152; P.IV:1098; PP.38:025; DD.61:230p

La fille de l'artiste à deux ans et demi avec un bateau. [Le Tremblay-sur-Mauldre]. 5-February/1938. Oil on canvas. 73 x 54 cm. Sotheby's. #15, N08546, 05/05/09. Formerly Marina Picasso Collection. (Inv 12842).

OPP.38:039; P.IV:1099; PP.38:026; Z.IX:98; BS.55:265; DD.61:81; GP.96:230p; HK.65:116p; MI.53*:81; MP.81*:195; MP.83*:155; PA.44a*:n/a; RH.02*:n/a; RH.04*:n/a; RH.05*:n/a; RO.53*:28; VE.81*:250





entouré par les dents ... (1). Paris. 6-February/1938.
Graphite on squared beige paper. 27 x 20,9 cm. Musée
Picasso, Paris.

OPP.38:344; MPP:3663.233r

entouré par les dents Paris. 6-February/1938.
Typescript on paper. 27,1 x 21,1 cm. Musée Picasso,
Paris.

OPP.38:321; MPP:3663.235r





entouré par les dents ... Paris. 6-February/1938.
Typescript on paper. 26,9 x 21 cm. Musée Picasso, Paris.

OPP.38:322; MPP:3663.236r

Cheval fatigué. Paris. 7-February/1938.
Brush, pencil & wash on paper. 20,9 x 29,5
cm. Museo Picasso, Málaga. Bernard Ruiz-
Picasso Collection. Courtesy Fundación
Almine & Bernard Ruiz-Picasso para el Arte.

OPP.38:134; MPM:1.34.A; GS.03:1.71





Taureau. Paris. 7-February/1938. Ink on transparent graph paper. 20,9 x 29,5 cm. The Museum of Modern Art, NYC. Gift of Marina Picasso.

OPP.38:241

Buste de femme à la chaise (Dora Maar) (IX). Paris. 8-February, 18-October/1938. Etching, aquatint & drypoint on Montval. [24,6 x 13,8] 32 x 24 cm. Musée National d'Art Moderne, Centre Georges Pompidou, Paris. (Inv AM.2003-3(27)). Dation 2003. Sotheby's. #280, N07888, 05/02/03.

OPP.38:105; B.I:308; Ba:643.9B; GC:34; P.IV:1236



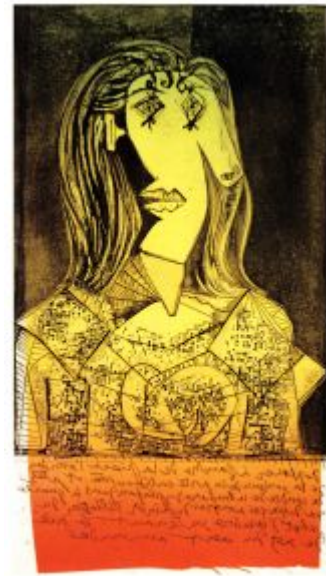


Buste de femme à la chaise (Dora Maar) (IX). Paris. 8-February, 18-October/1938. Etching & ink. 24,8 x 13,8 cm. Musée Picasso, Paris. Dation 1979.

OPP.38:139; Ba:643.9A; P.IV:1235; AB.06*:127; CW.89:187p

Buste de femme à la chaise (Dora Maar) (IX). Paris. 8-February, 18-October/1938. Etching & ink. 24,8 x 13,8 cm. Musée Picasso, Paris.

OPP.38:140; Ba:643.9C; BP.21:288p; CW.89:188p





Buste de femme à la chaise (Dora Maar) (I). Paris. 8-February, 18-October/1938. Etching, aquatint, scraper, and engraving on Chine Volant. 24,8 x 14 cm. Christie's. #155, 16388, 10/23-25/18.

OPP.38:146; Ba:643.1Bb; P.IV:1231

Buste de femme à la chaise (Dora Maar) (II). Paris. 8-February, 18-October/1938. Etching, aquatint, scraper & burin. 24,8 x 13,8 cm. Musée Picasso, Paris. Dation 1979.

OPP.38:263; Ba:643.2; MPP:2781; P.IV:1232; PP.20*:330





Buste de femme à la chaise (Dora Maar) (III). Paris. 8-February, 18-October/1938. Etching, aquatint, scraper & burin. 24,8 x 13,8 cm. Musée Picasso, Paris. Dation 1979.

OPP.38:264; Ba:643.3; MPP:2782; P.IV:1233

Buste de femme à la chaise (Dora Maar) (VI). Paris. 8-February, 18-October/1938. Etching, aquatint, scraper & burin. 24,8 x 13,8 cm. Private collection.

OPP.38:265; Ba:643.6; P.IV:1234





Buste de femme à la chaise (Dora Maar) (X) (André Breton, Anthologie de l'humour noir). Paris. 8-February, 18-October/1938. Etching & aquatint on Japon paper. 19,7 x 13,7 cm. Christie's. #302, 17163, 04/17-28/19.

OPP.38:266; Ba:643.10Bd; P.IV:1237

Buste de femme à la chaise (Dora Maar) (VII). Paris. 8-February, 18-October/1938. Drypoint, etching & scraping on Montval Vergé paper. 19,5 x 13,8 cm. Musée Picasso, Paris. Dation 1979.

OPP.38:305; Ba:643.7; MPP:2783





Buste de femme à la chaise (Dora Maar) (I). Paris. 8-February, 20-October/1938. Aquatint & scraping on Montval Vergé paper. 24,8 x 13,8 cm. Musée Picasso, Paris. Dation 1979.

OPP.38:306; Ba:643.1B; MPP:2786

Buste de femme à la chaise (Dora Maar) (V). Paris. 8-February, 18-October/1938. Burin, etching & scraping. 24,1 x 21,5 cm. Musée Picasso, Paris. Dation 1979.

OPP.38:308; Ba:643.5; MPP:2784





Buste de femme à la chaise (Dora Maar) (V). Paris. 8-February, 18-October/1938. Burin, etching & scraping. 24,8 x 13,8 cm. Musée Picasso, Paris. Dation 1979.

OPP.38:309; Ba:643.5B; MPP:2785

Buste de femme à la chaise (Dora Maar) (VIII). Paris. 8-February, 18-October/1938. Etching, aquatint & drypoint on Montval laid paper. 24,8 x 13,9 cm. Bonhams. #35, 21924, 05/11/15.

OPP.38:310; Ba:643.8





Buste de femme à la chaise (Dora Maar) (IV). Paris. 8-February, 18-October/1938. Etching, scraper, engraving & aquatint on Montval laid paper. 24,8 x 13,8 cm. Private collection.

OPP.38:367; Ba:643.4

dire sans trouble ...; rose rose d'ail rose rose ...; porte en treouverte Paris. 8-February/1938. Typescript on paper. 27,1 x 21,1 cm. Musée Picasso, Paris.

OPP.38:323; MPP:3663.237.03r





dire sans trouble ...; rose rose d'ail rose rose ...; porte en treouverte Paris. 8-February/1938. Typescript on paper. 27,1 x 21,1 cm. Musée Picasso, Paris.

OPP.38:324; MPP:3663.237.05r

dire sans trouble ...; rose rose d'ail rose rose ...; porte en treouverte Paris. 8-February/1938. Typescript on paper. 27,1 x 21,1 cm. Musée Picasso, Paris.

OPP.38:325; MPP:3663.237.01r





Femme assise accoudée (Nusch Éluard). Paris. 9-February/1938. Pen & charcoal on canvas. 96 x 72 cm. Private collection.

OPP.38:026; P.IV:1120; PP.38:027; BA.19c*:133p; BS.22*:35; CG.12*:60; DD.61:231; EC.16*:125; HS.98*:121; WR.96:84p

prix global Paris. 10-February/1938. Typescript on beige paper. 27,1 x 21,1 cm. Musée Picasso, Paris.

OPP.38:350; MPP:3663.242.01r





Portrait de femme au col vert (Marie-Thérèse Walter). [Le Tremblay-sur-Mauldre]. 12-February/1938. Oil on canvas. 55 x 46 cm. Museo Picasso, Málaga. On temporary loan from Fundación Almine & Bernard Ruiz-Picasso para el Arte.

OPP.38:014; P.IV:1116; PP.38:028; DD.61:149p; DP.20*:109; GS.03:1.20

Nature morte au pichet. [Le Tremblay-sur-Mauldre]. 12-February/1938. Oil on canvas. 22 x 27 cm. Daniel Malingue Collection, Paris.

OPP.38:283; BO.00*:20; CE.04*:8





exacte représentation ... (1), et auprès d'une barque ... (1).
[Le Tremblay-sur-Mauldre]. 12~19-February/1938. Pen & India ink
on paper. 25,7 x 35 cm. Musée Picasso, Paris.

OPP.38:138; MPP:3663.238.01r; CW.89:185p

exact représentation Paris. 12-February/1938.
Typescript on paper. 27,1 x 21,1 cm. Musée Picasso,
Paris.

OPP.38:326; MPP:3663.239.01r





exact représentation Paris. 12-February/1938.
Typescript on paper. 27,1 x 21,1 cm. Musée Picasso, Paris.

OPP.38:327; MPP:3663.239.03r

Nature morte, fruits et pot. Le Tremblay-sur-Mauldre. 13-February/1938.
Oil & Ripolin on canvas. [46 x 55,3] 46 x 55 cm. Seoul Auction. #152, 700 04/26/22. Formerly Christie's. #34, 16930, 02/27/19; Galería Leandro Navarro, Madrid.

OPP.38:153; PP.38:029; Z.IX:105;
PA.39a*:29





Portrait de Ambroise Vollard avec son chat. Le Tremblay-sur-Mauldre. 13-February/1938. Crayon & ink on paper. 20,6 x 13,3 cm. Private collection.

OPP.38:282; RP.11:44p

Homme nu debout avec un cheval. Le Tremblay-sur-Mauldre. 13-February/1938. Drypoint. 33,6 x 44,4 cm. Sotheby's. #129, L19164, 10/17/19. Formerly Marina Picasso Collection.

OPP.38:386; Ba:632.B



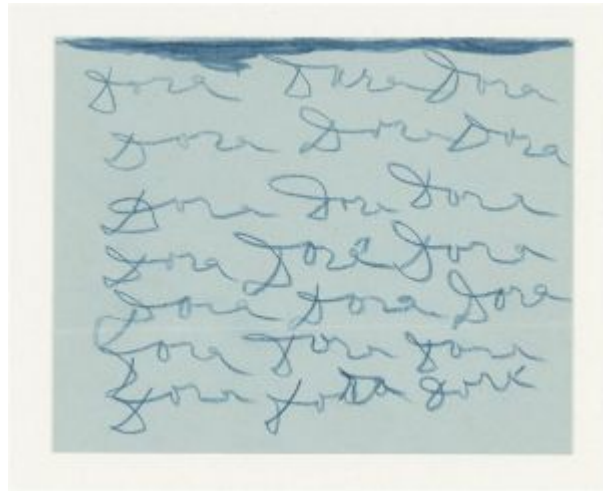


Homme nu debout avec un cheval. Le Tremblay-sur-Mauldre. 13-February/1938. Drypoint without steel facing on Montval laid paper, edition 56. 24,1 x 34,3 cm. Sotheby's. #69, N10015, 11/21/19..Formerly Marina Picasso Collection.

OPP.38:125; B.I:304; Ba:632; P.IV:1121

Dora, Dora, Dora, Paris. [14-February/1938]. Blue pencil on back of an invitation to Pierre Girieud Exhibition. 11 cm. Musée Picasso, Paris. Dora Maar Collection.

OPP.38:268; MPP:1998.368.v; AB.06:I.2





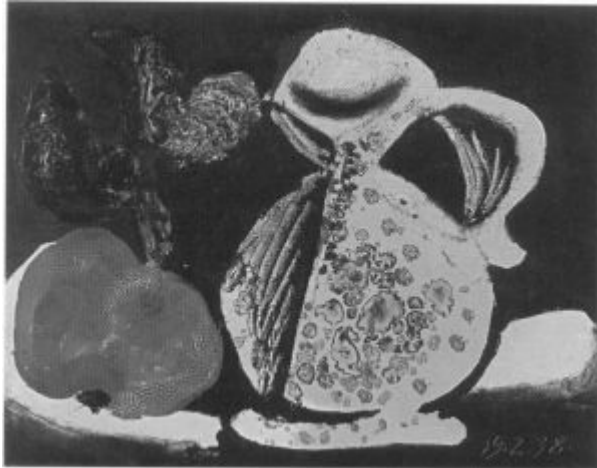
La femme au coq. Paris. Mid~End-February/1938. Oil on canvas. 145,5 x 121 cm. Staatsgalerie Stuttgart. (Inv L 1344). Formerly Josef Steegmann; The Baltimore Museum of Art; Mrs. Meric Gallery; Private collection, Switzerland.

OPP.38:090; P.IV:1117; PP.38:030; Z.IX:109; AB.39a*:345; AB.46:213p; AB.57*:n/a; CP.95:72p; HJ.83:111p; HJ.96:135p; JL.71:108p; JR.21:168p; JR.62*:5.16; JS.46:21; LU.93:189p; MM.00:73p; MS.00a:39p; NY.43f*:11; NY.45a*:14; NY.48a*:n/a; NY.48n*:24; PH.45a*:n/a; PL.62:12; RK.69:39; RP.81:17.6; SG.06:125p; SG.88:101p; SN.98:19p; UP.00:820; UW.84:103p; WW.91:415p

Nature morte au pichet bleu et à la pomme. [Le Tremblay-sur-Mauldre]. 18-February/1938. Oil on canvas. 33 x 41 cm. Marina Picasso Collection. (Inv 12846). Courtesy Galerie Jan Krugier, Geneva.

OPP.38:154; P.IV:1127; PP.38:031; DD.61:231p; GS.85*:76





Nature morte au pichet et à la pomme. Le Tremblay-sur-Mauldre. 19-February/1938. Oil on canvas [OIC]. 22 x 29 cm. Private collection.

OPP.38:119; PP.38:033b; JB.92:250p; PI.81:75

Nature morte, fruit et pichet. Le Tremblay-sur-Mauldre. 19-February/1938. Oil on canvas. 15,8 x 24 cm. Christie's. #302, 11/06/91.

OPP.38:155; PP.38:032; LP.99:160-161p





Nature morte au pichet et à la pomme jaune et verte. Le Tremblay-sur-Mauldre. 19-February/1938. Oil on canvas. 19 x 24 cm. Private collection.

OPP.38:156; P.IV:1124; PP.38:033; DD.61:231p; LE.07*:21

Nature morte à la pomme et au pichet bleu. [Le Tremblay-sur-Mauldre]. 19-February/1938. Oil on canvas. 20,6 x 24,6 cm. Richard Green Gallery. 2013. Formerly Sotheby's. #15, PF1206, 05/30/12.

OPP.38:259





Nu debout, flûtiste et jeune fille accroupis.
[Le Tremblay-sur-Mauldre]. 19-February/1938.
Drypoint. 24,7 x 34,5 [34,4] cm. Private collection.

OPP.38:260; B.I:305; Ba:633.B; P.IV:1122

et auprès d'une barque ... (1). Paris. 19-
February/1938. India ink on paper. 25,7 x 35 cm. Musée
Picasso, Paris.

OPP.38:359; MPP:3663.238.03r





et auprès d'une barque peinte au goudron Paris. 19-February/1938. Typescript on paper. 27,1 x 21,1 cm. Musée Picasso, Paris.

OPP.38:328; MPP:3663.240.01r

et auprès d'une barque peinte au goudron
Paris. 19-February/1938. Typescript on paper. 27,1 x 21,1 cm. Musée Picasso, Paris.

OPP.38:329; MPP:3663.240.03r





La femme au coq (Étude). Paris. [Late-February]/1938. Pencil on graph paper. 29,2 x 21 cm. Christie's. #582, 2047, 11/07/08.

OPP.38:245; BS.23a*:33e

descendu de la table qu'il serrait entre ses genoux ... Paris. 20-March/1938. Typescript on paper. 27,2 x 21,1 cm. Musée Picasso, Paris.

OPP.38:331; MPP:3663.245r





La femme au coq (Étude). Paris. 21-February/1938. Pencil. 29,2 x 21 cm. Christie's. #582, 2047, 11/07/08.

OPP.38:120; P.IV:1119; PP.38:034; Z.IX:108; BS.23a*:33a

La femme au coq (Étude). Paris. 21-February/1938. Pencil. 29,2 x 21 cm. Christie's. #582, 2047, 11/07/08.

OPP.38:121; PP.38:035; Z.IX:115; BS.23a*:33b





La femme au coq (Étude). Paris. 21-February/1938. Pencil on graph paper. 29,2 x 21 cm. Christie's. #582, 2047, 11/07/08.

OPP.38:244; BS.23a*:33c



La femme au coq (Étude). Paris. 23-February/1938. Pencil on graph paper. 29,2 x 21 cm. Christie's. #582, 2047, 11/07/08.

OPP.38:246; BS.23a*:33d



Nature morte au pichet et à la pomme. Le Tremblay-sur-Mauldre. 26-February/1938. Oil on canvas [OiC]. 19 x 24 cm. Private collection.

OPP.38:158; PP.38:036; DD.61:231p

Nature morte au pichet et à la pomme. Le Tremblay-sur-Mauldre. 26-February/1938. Oil on canvas. 16 x 24 cm. Olivier Malingue, London. 2020.

OPP.38:159; P.IV:1125; PP.38:037; DD.61:231p; LO.20*:n/a





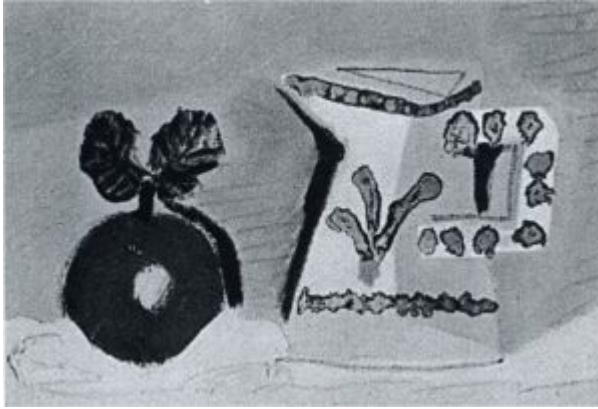
Maya en tablier rouge. Le Tremblay-sur-Mauldre. [Spring] 27-February/1938. Oil on plywood. 73 x 54 cm. Maya Widmaier Picasso Collection, Paris.

OPP.38:007; P.IV:1113; PP.38:061a; MG.03b*:39; MG.13*:77p; WR.96:376p; WS.95a*:111

Nature morte au pichet et à la pomme. Le Tremblay-sur-Mauldre. 27-February/1938. Oil on canvas. 19 x 27 cm. Private collection.

OPP.38:160; P.IV:1126; PP.38:038; DD.61:038p





Nature morte au pichet et à la pomme. Le Tremblay-sur-Mauldre. 27-February/1938. Oil on canvas [OiC]. 19 x 27 cm. Private collection.

OPP.38:161; PP.38:039; DD.61:231p

rai noir du soleil Paris. 1-March/1938. Typescript on beige paper. 27,1 x 21,1 cm. Musée Picasso, Paris.

OPP.38:351; MPP:3663.242.03r





Nature morte au pichet. [Le Tremblay-sur-Mauldre]. 6-March/1938. Oil on canvas. 19 x 24 cm. The Picasso Estate.

OPP.38:013; P.IV:1128; PP.38:040; DD.61:150p;
GL.84*:23; LE.07*:22

Faune à la diable et danseuse. [Le Tremblay-sur-Mauldre]. 6-March/1938. Burin, edition 50. [24,9 x 35,1] 24,8 x 34,8 cm. Serge Sorokko Gallery. 2005.

OPP.38:131; B.I:306; Ba:634.2





Faune à la diable et danseuse. [Le Tremblay-sur-Mauldre]. 6-March/1938. Burin. 24,8 x 34,8 cm. Private collection.

OPP.38:261; Ba:634.1; P.IV:1123

dodeline miroir ... (1). Paris. 9-March/1938. Graphite & red pencil on beige paper [Obverse of *recouvrant le jaune citron* 20,3 x 14 cm. Musée Picasso, Paris. Dation 1979.

OPP.38:240; MPP:3663.090338; MPP:3663.241r; AM.08:43p; BP.21:709p; CW.89:413p; PP.19:168p





recouvrant le jaune citron Paris. 9-March/1938. Pen & India ink on envelope [Reverse of *dodeline miroir ... (1)*]. 20,3 x 14 cm. Musée Picasso, Paris.

OPP.38:349; MPP:3663.241

dodeline miroir Paris. 9-March/1938. Typescript on beige paper. 27,1 x 21,1 cm. Musée Picasso, Paris.

OPP.38:352; MPP:3663.242.05r





Femme accoudée (Dora Maar). Paris. 14-March/1938. Oil on canvas. 69 x 55,5 cm. Marina Picasso Collection. (Inv 12854). Courtesy Galerie Jan Krugier, Geneva.

OPP.38:042; P.IV:1130; PP.38:041; Z.IX:126; DD.61:232; MP.81*:196



Buste de femme. Paris. 14-March/1938. Oil on canvas. 46 x 38 cm. Private collection.

OPP.38:162; P.IV:1133; PP.38:042; Z.IX:125



Femme assise (Dora Maar). Paris. 15-March/1938. Oil on canvas. 69 x 48,9 [50] cm. Christie's. #34, 2477, 11/01/11.

OPP.38:163; P.IV:1134; PP.38:043; Z.IX:135

Tête de femme, profil gauche. Paris. 16-March/1938. Oil on canvas. 62 x 48,5 [49] cm. Private collection.

OPP.38:071; PP.38:044; CG.12*:67; DD.61:232; MI.01*:110





Femme au chapeau bleu (Dora Maar). Paris. 17-March/1938. Oil on canvas. 46 x 38 cm. Private collection, Switzerland.

OPP.38:057; P.IV:1131; PP.38:046; Z.IX:124;
CH.10*:193p; WS.93*:43

Fumeur. Paris. 19-March/1938. Wood, cigarette, string, wool & oil on canvas [OiC]. 27 x 19 cm. Private collection.

OPP.38:164; PP.38:047; WS:177; DD.61:232p





je répète ... (1), descendu de la table ... (1). Paris. 19~20-March/1938. Pen & India ink on paper. 25,9 x 34,6 cm. Musée Picasso, Paris.

OPP.38:141; MPP:3663.243.01r; CW.89:191p

je repete personnages I et II devant l'autre assis ... Paris. 19-March/1938. Typescript on paper. 27,2 x 21,2 cm. Musée Picasso, Paris.

OPP.38:330; MPP:3663.244r





Visage de femme (Dora Maar). Paris. Spring/1938. Ink, crayon & oil on paper. 25 x 16 cm. Private collection.

OPP.38:047; PP.38:073a; WR.96:406p

Femmes à leur toilette. Paris. Spring/1938. Glued-on colored paper & gouache mounted on paper. 299 x 448 cm. Musée Picasso, Paris. Dation 1979.

OPP.38:081; MPP:176; P.IV:1164; PP.38:071; Z.IX:103; AB.06*:120; BP.21:68p; CK.10:221; EC.02:567; HC.88:7.36; JR.21:n/p; LP.99:162-163p; MJ.55*:n/a; PA.79a*:276; PP.20*:209; RB.99:108-109p; RP.60*:268; RP.81:18.7; SG.06:29p; SN.98:58p; UP.00:795; WR.80*:357p; WS.88:81; WW.91:426-427





L'homme à la bicyclette (Le poète Charles Albert Cingria). Paris. [Spring/1938]. Pen & ink on paper. 20,6 x 12,4 cm. Sotheby's. #442, 6489, 11/04/93. Formerly Sotheby's. #230, 06/26/91.

OPP.38:179; PP.05:346; PP.38:087a

L'artiste devant sa toile (Autoportrait). Paris. 22-March/1938. Charcoal on canvas. 130 x 94 cm. Musée Picasso, Paris. Dation 1979.

OPP.38:002; MPP:172; P.IV:1132; PP.38:049; AB.06*:103; AB.12*:197p; BJ.19*:n/a; DP.20:232p; FS.82:13p; MB.06*:n/a; MF.01:45p; MF.10:93p; MP.85:150; PA.79a*:272; PB.21:148; PD.93:34; RB.99:86p; RK.94:166p; RR.09*:28; SY.11*:n/a; UP.00:801; WR.80:348p; WR.96:157p; YP.13:125p





La coiffure (Dora Maar). Paris. 22-March/1938. Oil on canvas. 57 x 43,5 cm. Musée Picasso, Paris. Dation 1979.

OPP.38:082; MPP:171; P.IV:1135; PP.38:048; DD.61:232p; JR.21:171p; MB.06*:n/a; MP.85:149; PA.79a*:271; UP.00:798

La fermière. Paris. 23-March/1938. Charcoal & oil on canvas. 120 x 235 cm. Musée Picasso, Paris. Dation 1979.

OPP.38:109; MPP:173; P.IV:1138; PP.38:050; Z.IX:78; AB.12*:198-199p; CT.23:28p; DD.61:232p; GP.96:233p; JR.21:169p; MA.08a*:n/a; MB.06*:n/a; MN.80*:n/a; MP.85:151; PA.79a*:273; RK.94:164p; SD.05*:109; SY.11*:n/a





Le coq. Paris. 23-March/1938. Charcoal on cream wove paper. 76,9 x 56,9 cm. The Museum of Modern Art, NYC. Fractional and promised gift of Mr. and Mrs. David Rockefeller.

OPP.38:165; P.IV:1139; PP.38:051; Z.IX:114; AB.39a*:347; GT.81*:84; JC.01b:17p; JR.21:168p; NY.21g*:54; NY.74a*:144; PA.79c*:n/a; UP.00:819; WR.80*:354p

établissement épicier ... (1). Paris. 26-March/1938. Pen & India ink on paper. 26,2 x 17,5 cm. Musée Picasso, Paris.

OPP.38:345; MPP:3663.246r





etablissement epicier décrit minusculement Paris. 26-March/1938. Typescript on paper. 27,2 x 21,1 cm. Musée Picasso, Paris.

OPP.38:332; MPP:3663.247.01r

etablissement epicier décrit minusculement
Paris. 26-March/1938. Typescript on paper. 27,2 x 21,1 cm. Musée Picasso, Paris.

OPP.38:333; MPP:3663.247.03r





Le coq. Paris. 29-March/1938. Pastel on paper. 77,5 x 55 cm.
Ralph F. Colin Collection, NY.

OPP.38:004; P.IV:1140; PP.38:053; Z.IX:113; AB.39a*:348;
AB.57*:n/a; GD.77:49p; GP.96:230p; JL.71:109p; MR.53:103p;
NY.21g*:55; RI.41*:186; RP.60*:152; SN.98*:15; TI.71:89p;
UA.80:7; WR.80*:354p; WW.91:418p

Coq. Paris. 29-March/1938 [1939]. Pastel. 76 x 56 [55]
cm. Nationalgalerie, Museum Berggruen, Staatlichen
Museen zu Berlin. Formerly Private collection, NY.

OPP.38:128; P.IV:1137; PP.38:052; Z.IX:112;
AB.39a*:346; AB.46:214p; BL.06*:154p; BR.96*:56;
CH.10*:213p; JC.40:153p; JR.62*:5.15





Coq. Paris. 30-March/1938. Pastel on paper. 76.8 x 56.8 cm. Milwaukee Art Museum. (Inv M1959.373). Gift of Mr. and Mrs. Harry Lynde Bradley.

OPP.38:166; P.IV:1142; PP.38:054; Z.IX:110

immobile à genoux Paris. 30-March. Typescript on beige paper. 27,1 x 21,1 cm. Musée Picasso, Paris.

OPP.38:353; MPP:3663.242.07r





Tête de femme au béret, de profil (Paul Éluard, Solidarité).

Paris. 31-March/1938. Etching, edition 150. 10,5 x 7,5 cm. Scottish National Gallery of Modern Art, Edinburgh. (Inv A 35 / RPL 1/0290). Purchased with assistance of the National Heritage Memorial Fund and The Art Fund, 1994.

OPP.38:250; B.I:317; Ba:635.2B; GC:29; BA.19c*:115p;
BA.19c:36p; ED.07*:41

Profil d'homme barbu. Paris. 31-March/1938. Hectograph. 24,6 x 17,8 cm. Fundació Palau, Caldes d'Estrac. (Inv 0000198).

OPP.38:254; B.II:1830; Ba:727





Tête de femme au béret, de profil. Paris. 31-March/1938. Burin & scraping. 10.5 x 7,5 cm. Musée Picasso, Paris. Dation 1979.

OPP.38:307; Ba:635.2; MPP:2801

Tête de femme au béret, de profil. Paris. 31-March/1938. Burin, scraper & drypoint. 10,5 x 7,5 cm. Musée Picasso, Paris. Dation 1979.

OPP.38:311; Ba:635.1; MPP:2800





Maternité. Paris. 31-March/1938. Hectograph. 31 x 21 cm.
Sotheby's. #43, N10089, 06/25/19.

OPP.38:312; B.II:1829; Ba:736

sucre de la respiration Paris. 31-March/1938.
Typescript on beige paper. 27,1 x 21,1 cm. Musée
Picasso, Paris.

OPP.38:354; MPP:3663.242.09r





a ce moment la cloque ... (1). Paris. 2-April/1938. Pen & India ink on paper. 27,1 x 21,1 cm. Musée Picasso, Paris.

OPP.38:346; MPP:3663.248.01r



a ce moment la cloque ... Paris. 2-April/1938. Typescript on paper. 27,1 x 21,1 cm. Musée Picasso, Paris.

OPP.38:334; MPP:3663.249.01r



a ce moment la cloque Paris. 2-April/1938. Typescript on paper. 27,1 x 21,1 cm. Musée Picasso, Paris.

OPP.38:335; MPP:3663.249.03r

Le coq. Paris. 4-April/1938. Charcoal & oil on canvas. 144 x 118 cm. Private collection.

OPP.38:003; P.IV:1141; PP.38:056; Z.IX:111; MM.85a*:24





Femme la main sur une clé. Paris. 6-April/1938. Oil on canvas. 100 x 81 cm. Private collection.

OPP.38:167; P.IV:1167; PP.38:057; Z.IX:144; VO.16:87p; WR.96:392p

Carafe et compotier. Paris. 9-April/1938. Oil on canvas. 50,2 x 65,1 cm. Sotheby's. #60, 11/10/92.

OPP.38:168; PP.38:058





Construction sur toile. Paris. 10-April/1938. Oil, wood, nails & tin cup on canvas. [25] 22 x 27,2 cm. Fundación Almine & Bernard Ruiz-Picasso para el Arte.

OPP.38:070; P.IV:1157; PP.38:059; WS:178; BR.83a*:178; HP.65:89p; JB.92*:98; JL.66*:267; MG.03b*:35; MI.01*:108; RP.67b*:66; TO.04*:35

Nature morte à la pomme et au pichet. Paris. 10-April/1938. Oil on canvas. 22 x 27 cm. Sotheby's. #52, HK0852, 03/29-04/02/19.

OPP.38:142





Buste de femme (Dora Maar). Paris. 14-April/1938. Oil on canvas. 64,5 x 47 cm. Private collection.

OPP.38:020; P.IV:1143; PP.38:060; Z.IX:127; UP.00:799

Femme au chapeau (Dora Maar). Paris. 16-April/1938. Oil on canvas. 65 [61] x 47 cm. Christie's. #0039, 7562, 02/04/08. Formerly Sotheby's. #27, N07838, 11/05/02; Marina Picasso Collection. (Inv 12866).

OPP.38:029; P.IV:1145; PP.38:060a; DD.61:233p; MB.84*:125; MP.81*:202; MP.83*:160; WR.96:404p



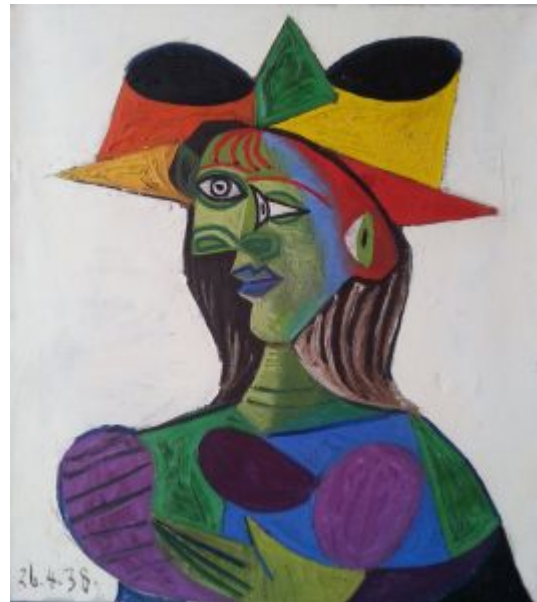


Tête de femme (La lectrice - Dora Maar). Paris. 19-April/1938. Oil on canvas. 66 x 51 cm. Sotheby's. #41, L08002 , 02/05/08. Formerly Nationalgalerie, Museum Berggruen, Staatlichen Museen zu Berlin. On loan.

OPP.38:234; P.IV:1144; PP.38:061; Z.IX:128; BL.06*:147p; SD.05:181p

Buste de femme. Paris. 26-April/1938. Oil on canvas. 81 x 72 cm. Private collection. Recovered 03/19. Taken from Abdul Mohsen Abdulmalik's yacht in Antibes, 03/07~11/99.

OPP.38:110; P.IV:1146; PP.38:062; Z.IX:138





Femme assise (Dora Maar). Paris. 27-April/1938. Ink, gouache & colored chalk on paper. 76,5 x 56 cm. Fondation Beyeler, Riehen/Basel. (Inv 72.5). Ernst Beyeler Collection, Basel.

OPP.38:063; P.IV:1147; PP.38:064; Z.IX:133; AB.05a*:104; AH.13*:76; AS.60:49; BO.16*:n/a; BS.81*:83; GP.96:233p; JC.59:68p; JS.46:22; PP.20*:211; UP.00:817; WR.80*:355p; WR.96:396p; WS.86:174; WW.91:417p; WW.94*:133

Buste de femme au chapeau. Paris. 27-April/1938. Pen & India ink. 77,3 x 56,5 cm. Musée Picasso, Paris. Dation 1979.

OPP.38:122; MPP:1202; PP.38:063; Z.IX:129; MB.06*:n/a





Buste de femme au chapeau (Dora Maar). Paris. 28-April/1938. Pastel, India ink & charcoal on paper. 76,5 x 56,2 cm. The National Gallery, London. On loan from Museum Berggruen, Berlin. Formerly Sotheby's. #45, 05/17/90.

OPP.38:054; P.IV:1148; PP.38:065; Z.IX:143; BL.06*:153p; BR.96*:57; RK.94*:60; WS.93*:32

Buste de femme. Paris. 28-April/1938. India ink. 76,6 x 55 cm. Private collection.

OPP.38:099; PP.38:066; Z.IX:130; LB.58:7p





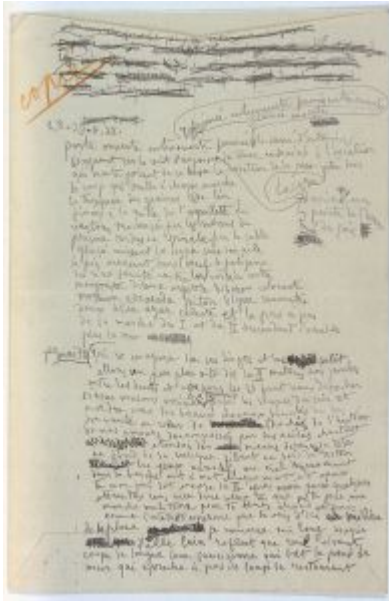
à ce moment l'I ... (1). Paris. 28-April/1938. Black pencil on invitation card [Obverse of *A ce moment de l'I gonflant ...*]. 17,6 x 11,9 cm. Musée Picasso, Paris.

OPP.38:247; MPP:3663.250r; MPP:3663.28/04/38; AM.08:56p

A ce moment de l'I gonflant Paris. 28-April/1938. Printed invitation card [Reverse of *à ce moment l'I ... (1)*]. 17,6 x 11,9 cm. Musée Picasso, Paris.

OPP.38:360; MPP:3663.250v





porte ouverte ... (1). Paris. 28-April, 1-May/1938. Black pencil on back of envelope. 24 x 16 cm. Musée Picasso, Paris.

OPP.38:248; AM.08:57p

Porte ou verte ... (2); qui s'évapore sur ses linges ... (2). Paris. 28-April~1-May/1938. Color pencils, black ink & graphite on beige paper [Obverse of *porte ouverte entrouverte ...*]. 24 x 15,9 cm. Musée Picasso, Paris.

OPP.38:291; MPP:3663.253r





à ce moment l'I ... (1); porte ouverte ... (1); qui s'évapore sur ses linges ... (1). Paris. 28-April~1-May/1938. Pen & India ink on paper. 25,7 x 17,7 cm. Musée Picasso, Paris.

OPP.38:347; MPP:3663.251r

porte ouverte entrouverte Paris. 28-April~1-May/1938. Typewritten on beige envelope [Reverse of *Porte ou verte ... (2)*]; *qui s'évapore sur ses linges ... (2)*. 24 x 15,9 cm. Musée Picasso, Paris.

OPP.38:361; MPP:3663.253v





à ce moment de l'I gonflant Paris. 28-April/1938.
Typescript on paper. 27,1 x 21,1 cm. Musée Picasso, Paris.

OPP.38:336; MPP:3663.252r

porte ouverte Paris. 28~29-April/1936. Typescript
on paper. 27,1 x 21,1 cm. Musée Picasso, Paris.

OPP.38:356; MPP:3663.254.01r





Femme assise (Dora Maar). Paris. 29-April/1938. Ink, charcoal & pastel on paper. 77,5 x 57,2 cm. The Metropolitan Museum of Art, NYC. (Inv 1999.363.70). Jacques and Natasha Gelman Collection, 1998. Formerly Mrs. Meric Gallery Collection.

OPP.38:062; PP.38:068; Z.IX:132; AB.39a*:352; AB.46:220p; FC.15:95p; GT.10*:82; MR.94*:n/a; NY.21g*:56; NY.45a*:22; NY.48a*:n/a; NY.89b*:205p; PH.45a*:n/a; UP.00:816; WR.80*:355p; WR.96*:396p; WS.86:173; WW.94*:134

Femme assise. Paris. 29-April/1938. India ink. 76,5 x 55 cm. Private collection.

OPP.38:114; PP.38:067; Z.IX:131





Tête de femme (Dora Maar). Paris. May/1938. Oil on canvas [OIC]. 38 x 29,5 cm. Private collection.

OPP.38:172; PP.38:077; DD.61:233p

qui s'évapore sur ses linges ... Paris. 1-May/1936. Typescript on paper. 27,1 x 21,1 cm. Musée Picasso, Paris.

OPP.38:357; MPP:3663.254.03r





Femme au fauteuil. Paris. 5-May/1938. India ink on paper. 77 x 57 cm. Private collection. Formerly Christie's. #68, 6735, 06/24/03; Marina Picasso Collection. (Inv 03969).

OPP.38:041; PP.38:069; MP.81*:209; NY.83b*:53; PD.02*:66; VE.81*:255

Femme assise sur une chaise (Dora Maar). Paris. 7-May/1938. Oil on canvas. 124.5 x 87 cm. Sotheby's. #24, N09430, 11/04/14. Formerly Adolph Alfred Taubman Collection; Sotheby's. #21, L09109, 12/07/99.

OPP.38:130; PP.38:072; Z.IX:145; MC.00:122p





Buste de femme (Dora Maar). Paris. 8-May/1938. Gouache.
76 x 57 cm. Private collection.

OPP.38:170; P.IV:1150; PP.38:073; Z.IX:150; BS.86a*:72



Buste de femme (Dora Maar). Paris. 9-May/1938.
Oil on canvas. 46 x 38 cm. Private collection.

OPP.38:111; PP.38:074; Z.IX:122



Buste de femme. Paris. 10-May/1938. Oil & gouache on canvas. 68 x 51 cm. The Museum of Fine Arts, Houston. The Lewis Collection.

OPP.38:123; PP.38:070; Z.IX:121; NY.71b*:52

Femme assise sur une chaise. Paris. 12-May/1938. India ink. 45 x 24 cm. Private collection.

OPP.38:171; PP.38:075; Z.IX:139





Portrait de Dora Maar assise. Paris. 13-May/1938. India ink, gouache & oil on paper laid on canvas. 68 x 44,7 cm. Tate Modern, London. (Inv T00341). Purchased,1960.

OPP.38:019; P.IV:1153; PP.38:076; Z.IX:152; EC.16*:139; LO.57f*:16; LO.59b*:n/a; MM.07*:105; OS.56*:182; PP.20*:210; RS.88:127p

Femme couchée sur fond cachou. Paris. [October~November] 17-May/1938. Oil on canvas. 90 x 118,5 cm. Marina Picasso Collection. (Inv 12872). Courtesy Galerie Jan Krugier, Geneva.

OPP.38:037; P.IV:1156; PP.38:045; Z.IX:218; DD.61:233p; GS.85*:77; LU.93:181p; LU.93:181p; MP.81*:204; SN.98*:16; YB.99*:111





Buste de femme (Dora Maar). Paris. 20-May/1938.
Oil on canvas. [44,5 x 41] 45 x 40,3 cm. Yusaku
Maezawa Collection. Formerly Christie's. #13B, 12145,
11/16/16.

OPP.38:173; P.IV:1154; PP.38:079; Z.IX:120;
DD.61:234p

Femme assise (Dora Maar). Paris. 22-May/1938.
Oil on canvas. 45,7 x 38 cm. Auckland Art Gallery Toi
o Tamaki, New Zealand. (Inv 2023/6/5). Formerly
Julian and Josie Robertson Collection; Sotheby's.
#55, 04/03/90.

OPP.38:129; P.IV:1151; PP.38:081; DD.61:234





Portrait de femme aux cheveux verts. Paris. 22-May/1938.
Oil on canvas. [38 x 29,5] 37,5 x 30 cm. Private collection.

OPP.38:174; P.IV:1155; PP.38:080; DD.61:234p;
RP.11*:231p

Nu au peignoir. Paris. 23-May/1938. Pen & black ink, brush & oil & mineral spirits. 45,4 x 24 cm. The Saint Louis Art Museum. (Inv 72:1985). Gift of Sarah Jane May Waldheim in memory of Morton J. May and Morton D. May.

OPP.38:175; P.IV:1149; PP.38:082; Z.IX:151





Femme assise au chapeau (Dora Maar). Paris. 24-May/1938. Oil on canvas [OiC]. [72,3 x 62,2] 73 x 60 cm. Acquavella Galleries, NY. Formerly Walter P. Chrysler, Jr. Collection, NY.

OPP.38:176; PP.38:083; Z.IX:157; AB.39a*:349; AB.39b*:162; AB.46:215p; AS.60:54; JC.40:141p; RI.41*:188; RP.60*:153; WC.62*:1; WR.80*:356p

Métamorphoses. Paris. 26-May/1938. Pen & black ink on Arches paper. 31,5 x 35 cm. Fine Arts Museums of San Francisco. (Inv 1988.2.72). De Young & Legion of Honor. Gift of Michael Terzian, 1988.

OPP.38:285; SF.89*:n/a





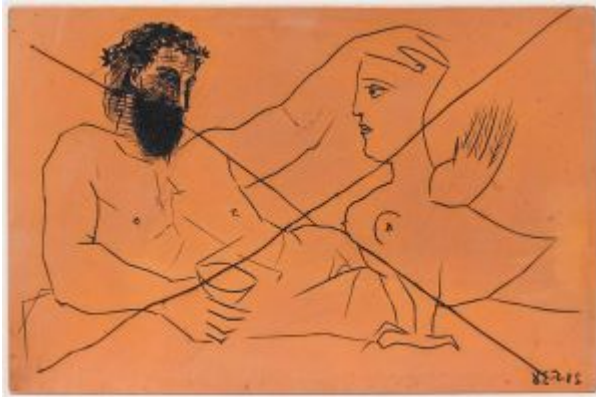
Buveur caressant sa chimère (Iliazd, Afat). Paris. 28-May/1938. Etching & burin, edition 64. 14,8 x 24,6 cm. Fine Arts Museums of San Francisco. (Inv 1988.2.72). Gift of Michael Terzian.

OPP.38:107; B.I:314; Ba:639.Bd; GC:33.4; AB.06:128p; LB.58:8p

Dormeuse (Iliazd, Afat). Paris. 28-May/1938. Engraving on Montval wove à la cuve paper. [15 x 25] 14,6 x 24,8 cm. Fine Arts Museums of San Francisco. (Inv 1998.40.114.3). Gift of the Reva & David Logan Foundation.

OPP.38:255; B.I:313; Ba:638.Bd; GC:33.3





Buveur caressant sa chimère. Paris. 28-May/1938. Copper plate for *Buveur caressant sa chimère (Iliadz, Afat)*. 14,8 x 24,6 cm. Musée Picasso, Paris. Don des héritiers Picasso en 1982.

OPP.38:299; MPP:1982.56

Dormeuse. Paris. 28-May/1938. Burin. 14,7 x 24,6 cm. Musée Picasso, Paris. Dation 1979.

OPP.38:381; Ba:638; MPP:2795





Buveur caressant sa chimère. Paris. 28-May/1938. Burin. 15 x 24,5 cm. Musée Picasso, Paris. Dation 1979.

OPP.38:382; Ba:639; MPP:2796

Dormeuse. Paris. 28-May/1938. Copper plate for *Dormeuse (Iliazd, Afat)*. 14,7 x 24,7 cm. Musée Picasso, Paris. Don des héritiers Picasso en 1982.

OPP.38:298; MPP:1982.55





Femme assise dans un fauteuil (Dora Maar). Paris. 31-May/1938. Oil on canvas. 188,5 x 129,5 cm. Fondation Beyeler, Riehen/Basel. (Inv 95.5). Formerly Estate of Jacqueline Roque Picasso.

OPP.38:084; P.IV:1181; PP.38:084; AB.05a*:107; AB.06*:133; AH.13*:69; BA.19c*:116p; CG.12*:62; GB.87:270; GL.84*:24; JR.14*:239p; MA.17*:175p; MG.03b*:38; MM.85a*:25; TV.06*:29; WS.93*:26; WW.91:422p

Tête de femme au chapeau. Paris. 31-May/1938. India ink. 45,5 x 23,5 cm. Galerie Hopkins-Custot. 2007. Formerly Christie's. #425, 12/03/85.

OPP.38:177; P.IV:1178; PP.38:085; Z.IX:141





Femme assise (Dora Maar), Paris. 31-May/1938. Pen & India ink on paper. [45 x 24] 45,9 x 24,5 cm. Christie's. #18, 23172, 05/16/24.

OPP.38:178; P.IV:1179; PP.38:086; Z.IX:146; CH.68a*:93; WA.81a*:28

Femme assise. Paris. 1-June/1938. India ink & crayon on paper. 45,1 x 24,3 cm. Private collection. Formerly Peter and Irene Ludwig, Aachen; Galerie Rosengart, Lucerne.

OPP.38:073; P.IV:1180; PP.38:087; Z.IX:147; LC.92:37; WO.92*:37





Dora avec un chapeau de paille. Paris. 1-June/1938. Colored pencil on paper. 13,6 x 12 cm. Nationalgalerie, Museum Berggruen, Staatlichen Museen zu Berlin. Formerly Heinz Berggruen, Paris; Dora Maar Collection.

OPP.38:145; BL.06*:148p; PA.98d*:76

Buste de femme à la frange (Dora Maar). Paris. 2-June/1938. Oil on canvas. 36 x 23 cm. Madonna. Formerly Christie's. #512, 9356, 05/09/00; Claude Ruiz-Picasso Collection.

OPP.38:180; P.IV:1152; PP.38:088; Z.IX:123; DD.61:234p; NY.98b*:23





Couple. Paris. 2-June/1938. Burin. 14,8 x 24,5 cm. Musée Picasso, Paris. Dation 1979.

OPP.38:292; Ba:640; MPP:2797

Couple (Iliazd, Afat). Paris. 2-June/1938. Burin. 14,8 x 24,6 cm. Christie's. #244, 1039, 12/11/01.

OPP.38:031; B.I:315; Ba:640.Bd; GC:33.5; AB.06:128p; LB.58:8p





Nature morte à la fleur. Paris. 5-June/1938. Oil, wood, cardboard, metal, nails & fabric on canvas. 22,1 x 27,1 cm. Christie's. #26, 3442, 11/04/13. Formerly Marina Picasso Collection. (Inv 55392).

OPP.38:181; P.IV:1158; PP.38:089; WS:179; BR.83a*:74; JL.66*:269; MP.81*:200; MP.83*:161; MU.07a*:193; PA.00b*:141; RP.67c*:67; VE.81*:252; VI.05*:142

Études: Dora Maar / Marie-Thérèse. Paris. 7-June/1938. Pen & India ink on paper. 45 x 24 cm. Nationalgalerie, Museum Berggruen, Staatlichen Museen zu Berlin. Formerly Heinz Berggruen Collection.

OPP.38:182; P.IV:1186; PP.38:090; Z.IX:140; BL.06*:146p





Femme assise sur une chaise. Paris. 7-June/1938. India ink. 45 x 24 cm.
Private collection.

OPP.38:183; PP.38:091; Z.IX:142

Homme et nu féminin de profil. Paris. 7-June/1938. India ink. 45 x 24 cm. Private collection.

OPP.38:184; P.IV:1188; PP.38:092; Z.IX:167





Nu debout. Paris. 7-June/1938. Inka ink. 45 x 24 cm. Private collection.

OPP.38:185; P.IV:1187; PP.38:093; Z.IX:168

Études. Paris. 9-June/1938. Inka ink. 45 x 24 cm. Private collection.

OPP.38:186; P.IV:1176; PP.38:094; Z.IX:153





Tête de femme. Paris. 9-June/1938. Inka ink. 45 x 24 cm. Private collection.

OPP.38:187; P.IV:1171; P.IV:1177; PP.38:095; Z.IX:154

Tête de femme. Paris. 9-June/1938. Inka ink. 45 x 24 cm. Private collection.

OPP.38:188; P.IV:1172; PP.38:096; Z.IX:155; JC.69:12a





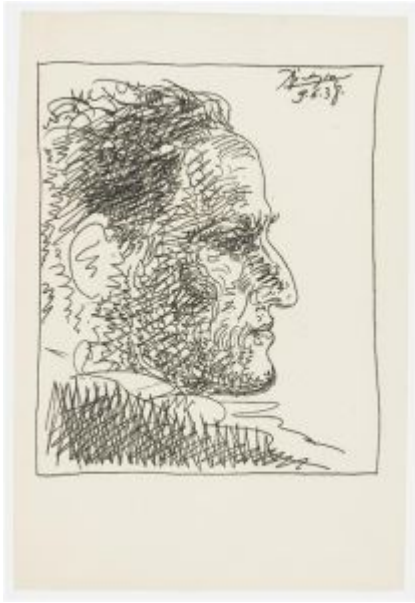
Tête de femme (Mary Callery) (Pour Madame Calerie). Paris. 9-June/1938. Pen & India ink on paper. 45,4 x 24,1 cm. Christie's. #580, 2047, 11/07/08.

OPP.38:242

Tête de femme (Mary Callery) (Pour Egenia). Paris. 9-June/1938. Pen & India ink on paper. 44,8 x 24,1 cm. Christie's. #581, 2047, 11/07/08.

OPP.38:243



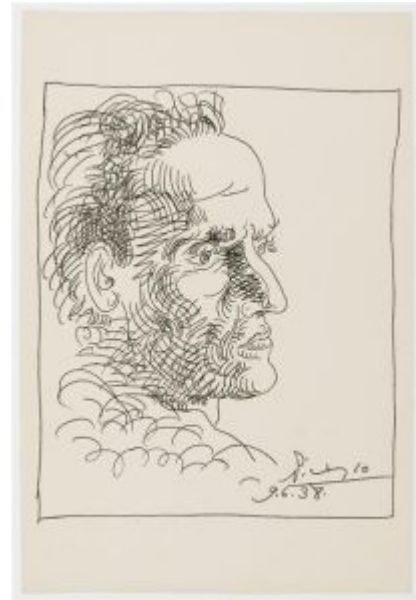


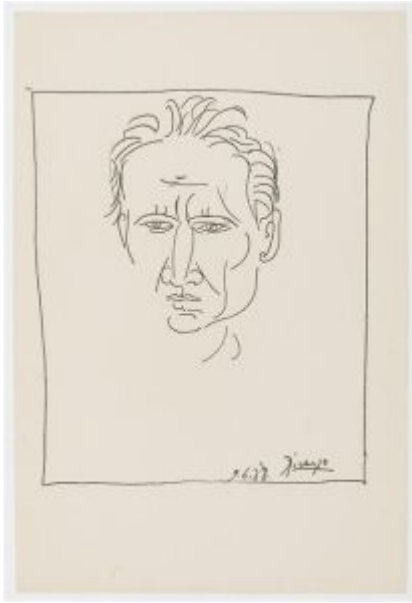
Portrait posthume de César Vallejo II. Paris. 9-June/1938. Engraving made with duplicator. 22 x 18,3 cm. Musée Picasso, Paris. Dation 1979.

OPP.38:267; B.II:1831; MPP:2803; TO.04*:42

Portrait posthume de César Vallejo I. Paris. 9-June/1938. Wax crayon on Vergé paper. 22 x 18,3 cm. Musée Picasso, Paris. Dation 1979.

OPP.38:294; B.II:1828; MPP:2802





Portrait posthume de César Vallejo III. Paris. 9-June/1938. Wax crayon on Vergé paper. 20,7 x 18,2 cm. Musée Picasso, Paris. Dation 1979.

OPP.38:295; MPP:2804

la rose chante Paris. 9-June/1938. Typescript on beige paper. 27,1 x 21,1 cm. Musée Picasso, Paris.

OPP.38:355; MPP:3663.242.11r





Tête de femme. Paris. 13-June/1938. Pen & India ink on paper. 46 x 24,5 cm. Musée Picasso, Paris. Dation 1979.

OPP.38:043; MPP:1203; P.IV:1170; PP.38:101; Z.IX:156; AB.06*:128; JC.69:12b; JL.71:106p; MB.06*:n/a; RP.67a:11p; UP.00:812

Baigneuse. Paris. 13-June/1938. India ink & oil on paper laid down on canvas. 45 x 24 cm. Sotheby's. #19, PF2343, 12/13/23.

OPP.38:078; PP.38:106; Z.IX:163; RD.00*:116





Baigneuse. Paris. 13-June/1938. India ink & oil [OIC]. 45 x 24 cm. Private collection.

OPP.38:087; PP.38:102; Z.IX:165

Baigneuse. Paris. 13-June/1938. India ink & oil [OIC]. 45 x 24 cm. Private collection.

OPP.38:088; P.IV:1184; PP.38:103; Z.IX:162





Tête de femme. Paris. 13-June/1938. India ink. 45 x 24 cm. Private collection.

OPP.38:189; P.IV:1175; PP.38:097; Z.IX:158; BS.55:55p; LB.58:85p

Tête de femme. Paris. 13-June/1938. Pen & black ink. 45,5 x 24,2 cm. Christie's. #150, 05/09/91.

OPP.38:190; PP.38:098; Z.IX:159





Tête de femme. Paris. 13-June/1938. Inda ink. 45 x 24 cm. Private collection.

OPP.38:191; P.IV:1173; PP.38:099; Z.IX:160; AS.60:77p

Tête de femme. Paris. 13-June/1938. Inda ink. 45 X 24 cm. Private collection.

OPP.38:192; P.IV:1174; PP.38:100; Z.IX:161





Tête de femme. Paris. 13-June/1938. Oil, gouache, watercolor & India ink [OIC]. 47,7 x 24,2 cm. Private collection.

OPP.38:193; PP.38:101a; GP.66:99

Femme assise (Dora Maar). Paris. 14-June/1938. India ink, pastel & color crayon on paper. 45,5 x 24 cm. Musée Picasso, Paris. Dation 1979.

OPP.38:064; MPP:1204; P.IV:1169; PP.38:104; Z.IX:149;
BA.19c*:123p; MB.06*:n/a; PD.06*:270p; SD.05*:96; SP.04*:n/a;
TK.04*:n/a; WS.86:176; WS.93*:33





Nu debout devant une cabine. Paris. 14-June/1938. India ink & crayon.
45 x 24 cm. Private collection.

OPP.38:089; P.IV:1183; PP.38:105; Z.IX:169

**Buveur caressant une femme allongée
(II) (Iliazd, Afat).** Paris. 19-June/1938.
Aquatint & etching, edition 50. 14,6 x 24,9
cm. The Museum of Modern Art, NYC. (Inv
974.1964.6). The Louis E. Stern Collection;
Sotheby's. #297, L04162, 12/02/04.

OPP.38:256; B.I:316; Ba:641.2Bd;
GC:33.6; AB.06:128p





Femme au fauteuil (Luc Decaunes, L'indicatif présent ou l'infirmes tel qu'il est). Paris. 19-June/1938. Etching on Montval laid paper. 17 x 11,2 cm. Fine Arts Museums of San Francisco. (Inv 1999.165.44.1). Gift of the Reva & David Logan Foundation.

OPP.38:257; B.I:307; GC:30; AB.06*:130

Buveur caressant une femme allongée.
Paris. 19-June/1938. Etching, scraping & burin. 24,8 x 14,7 cm. Musée Picasso, Paris. Dation 1979.

OPP.38:293; Ba:641.2B; MPP:2799





Femme au fauteuil (I). Paris. 19-June/1938. Etching. 16,8 x 11,2 cm. Musée Picasso, Paris. Dation 1979.

OPP.38:300; MPP:2778

Femme au fauteuil (II). Paris. 19-June/1938. Etching on Montal Vergé paper. 338 x 22,5 cm. Musée Picasso, Paris. Dation 1979.

OPP.38:303; MPP:2779





Buveur caressant une femme allongée (I).
Paris. 19-June/1938. Burin & etching. 14,6 x 24,8
cm. Musée Picasso, Paris. Dation 1979.

OPP.38:304; Ba:641.2; MPP:2798

Femme sacrifiant une chèvre. Paris.
[Summer] 20-June/1938. Graphite on
vellum paper. 24,2 x 45,5 cm. Musée
Picasso, Paris. Dation 1979.

OPP.38:048; MPP:1205.v; PP.38:109;
Z.IX:116; CP.95:127p; JR.21:850p;
LU.93:176; MB.06*:n/a; PD.06*:77p;
PP.19:277p; SN.98*:17; WS.93*:18





Baigneuses à la cabine. Paris. 20-June/1938. India ink, color pencil & pencil. 45,5 x 24,5 cm. Musée Picasso, Paris. Dation 1979.

OPP.38:055; MPP:1206; P.IV:1182; PP.38:107; Z.IX:164; MA.08a*:n/a; MB.06*:n/a; ME.82a*:85; WS.93*:34

Femme debout. Paris. 20-June/1938. India ink & tinted wash. 45,5 x 24,2 cm. Musée Picasso, Paris. Dation 1979.

OPP.38:091; MPP:1205.r; P.IV:1185; PP.38:108; Z.IX:166; MB.06*:n/a



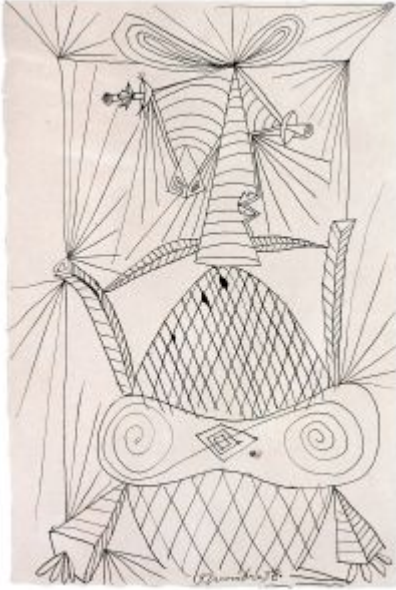


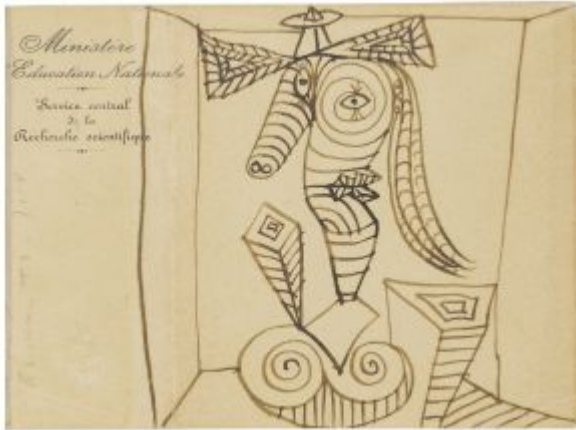
Figure féminine assise sur une chaise. [Mougins].
[Summer]/1938. India ink on paper. 26 x 17 cm. Private collection.

OPP.38:079; RD.00*:117

Maya endormie. [Le Tremblay-sur-Mauldre].
Summer/1938. Pencil on squared paper. 23,7 x 13,9 cm.
Private collection.

OPP.38:196; PP.38:113; Z.X:550; HK.65:121p



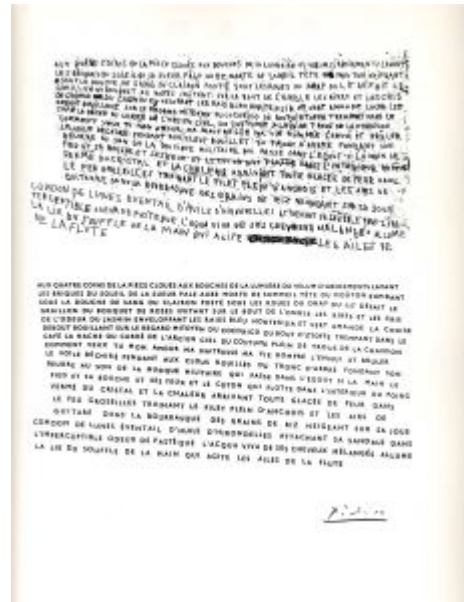


Buste de femme. Paris. [Summer]/1938. Pen & ink on paper. 11,8 x 17,6 cm. Galeria Mayoral, Barcelona. Formerly Christie's. #51, 19434, 09/14/21.

OPP.38:370

AUX QUATRE COINS DE LA PIÈCE ... (3), CORDON DE LUNES (2) ..., AUX QUATRE COINS DE LA PIÈCE ... (4), CORDON DE LUNES (3) Paris. 22-June/1938. Ink. S/U. Musée Picasso, Paris.

OPP.38:314; CW.89:197p





aux quatre coins de la pièce ... (1). Paris. 22-June/1938. Pen & India ink on paper. 20,2 x 13,9 cm. Musée Picasso, Paris.

OPP.38:348; MPP:3663.255r

aux quatre coins de la pièce Paris. 22-June/1938. Pen & ink on paper. 70 x 25,8 cm. Musée Picasso, Paris.

OPP.38:364; MPP:3663.256.r





aux quatre coins de la pièce ... Paris. 22-June/1938. Pen & ink on paper. 70 x 25,8 cm. Musée Picasso, Paris.

OPP.38:365; MPP:3663.256.v

aux quatre coins de la pièce ... Paris. 22-June/1938. Typescript on paper. 27,1 x 21,1 cm. Musée Picasso, Paris.

OPP.38:337; MPP:3663.257(1)r





aux quatre coins de la pièce Paris. 22-June/1938.
Typescript on paper. 27,1 x 21,1 cm. Musée Picasso, Paris.

OPP.38:338; MPP:3663.257(2)r

aux quatre coins de la pièce Paris. 22-June/1938. Typescript on paper. 27,1 x 21,1 cm. Musée Picasso, Paris.

OPP.38:339; MPP:3663.258r





Buste de femme au chapeau de paille sur fond fleuri (Marie-Thérèse). Le Tremblay-sur-Mauldre. 25-June/1938. Oil on canvas. 73 x 60 cm. Museum Sammlung Rosengart, Luzern. Siegfried & Angela Rosengart Collection.

OPP.38:012; P.IV:1193; PP.38:110; DD.61:153p;
KB.01*:125; RD.96*:47; UP.00:803; WS.93*:35;
WW.91:421p; WW.94*:138

cordón de lunes ... (1). Paris. 25-June/1938. Pen, black ink, brown ink & graphite on beige paper [Obverse of *cordón de lunes ...*]. 14,6 x 17,4 cm. Musée Picasso, Paris.

OPP.38:362; MPP:3663.259r





cordons de lunes Paris. 25-June/1938. Pen, black ink, brown ink & graphite on beige envelope [Reverse of *cordons de lunes ... (1)*]. 14,6 x 17,4 cm. Musée Picasso, Paris.

OPP.38:363; MPP:3663.259v

Femme debout. Paris. 29-June/1938. India ink & crayon [OIC]. 45 x 24 cm. Private collection.

OPP.38:194; P.IV:1166; PP.38:111; Z.IX:148





Portrait de Maya. [Le Tremblay-sur-Mauldre]. 1-July/938. Pencil. 25,7 x 17,5 cm. Private collection.

OPP.38:195; P.IV:1189; PP.38:112; Z.IX:174; HK.65:116p



Tête de jeune fille au poème (Marie-Thérèse). Le Tremblay-sur-Mauldre. 2-July/1938. Oil on canvas. 65 x 50 cm. Private collection, Switzerland.

OPP.38:066; P.IV:1190; PP.38:114; Z.IX:170;
BP.21:714p; KB.01*:127; RP.60*:154



Femme assise au chapeau de paille (Marie-Thérèse). Le Tremblay-sur-Mauldre. 2-July/1938. Oil on canvas. 65 x 54 cm. Christie's. #28A, 22043, 05/11/23. Formerly Sotheby's. #46, L04002, 02/03/04.

OPP.38:106; P.IV:1191; PP.38:115; DD.61:234p



Portrait de femme (Marie-Thérèse). Le Tremblay-sur-Mauldre. 2-July/1938. Oil on canvas. 65 x 54 cm. Private collection.

OPP.38:112; P.IV:1192; PP.38:116; DD.61:234p



Femme à la colerette (Marie-Thérèse). Le Tremblay-sur-Mauldre. 3-July/1938. Oil on canvas. 65 x 54 cm. Sotheby's. #40, NY7545, 11/09/00.

OPP.38:030; PP.38:117; Z.IX:173; DC.74:163;
DD.61:234p; JP.81*:42; NY.81b*:19; PA.44a*:n/a

Nature morte à l'instrument de musique. Le Tremblay-sur-Mauldre. 3-July/1938. Oil on canvas. 54 x 65,5 cm. Private collection.

OPP.38:124; PP.38:118; Z.IX:106;
NY.71b*:53





Nature morte au pichet. Paris. 4-July/1938. Oil on canvas. 46 x 61 cm. Helly Nahmad Collection, Monaco/London. Formerly Christie's. #44, 7857, 06/23/10.

OPP.38:197; PP.38:119; Z.IX:176; MR.13*:60; PA.39a*:n/a

Femme assise dans une chaise. Paris. 4-July/1938. Pen & India ink on paper. 65 x 50 cm. Fondation Beyeler, Riehen/Basel. (Inv 65.4).

OPP.38:287; PP.38:121; Z.IX:179; AH.13*:77; BA.19c*:117p; BE.09*:64; HO.16a*:103p; NY.21g*:57





Baigneuses et crabe. Paris. 4-July/1938. Pen & India ink on paper. [44 x 68] 44,4 x 67,8 cm. Christie's. #53A, 17154, 05/13/19.

OPP.38:313; PP.38:120; Z.IX:171; FR.65a*:82; KS.62:19p

Femme debout les bras écartés (Pour Mary Callery). Paris. 5-July/1938. Pen, India ink over charcoal. 30,8 x 20,5 cm. Private collection, Germany. Formerly Sotheby's. #46, 06/30/92.

OPP.38:080; PP.38:123; Z.IX:178; MD.02*:222p; RD.00*:118; SN.98*:18; VO.16:86p





Femme debout. Paris. 5-July/1938. India ink. 45 x 24 cm. Private collection.

OPP.38:094; P.IV:1199; PP.38:122; Z.IX:177

Femme debout. Paris. 5-July/1938. India ink. 20,3 x 13,7 cm. Mitchell-Innes and Nash. 2008. Formerly Bonhams and Butterfields, San Francisco, CA. 2007; Sotheby's. #307, 11/09/94; Mr. & Mrs. Lee A. Ault Collection, NY.

OPP.38:095; PP.38:124; Z.IX:181; BS.08a*:n/a; JR.62*:8.36; NY.08d*:n/a





Femme debout. Mougins. 9-July/1938. India ink. 24 x 18 cm. Private collection.

OPP.38:096; P.IV:1198; PP.38:125; Z.IX:180; HP.64:51p

Baigneuses. Mougins. 9-July/1938. India ink & rubbed petals. 18 x 24 cm. Private collection.

OPP.38:097; P.IV:1195; PP.38:126; Z.IX:182; HP.64:53p





Baigneuses au crabe. Mougins. 10-July/1938.
Gouache, watercolor, India ink & rubbed petals on paper. 36,5 x 50,5 [50.7] cm. Musée Picasso, Paris. Dation 1979.

OPP.38:061; MPP:1207; P.IV:1196; PP.38:127;
Z.IX:172; BP.21:818p; HP.64:52p; IC.05*:98;
MB.06*:n/a; PA.79a*:535; SN.98*:19;
UP.00:810; WS.86:172; WS.93*:25

Composition: barque et personnages.
[Mougins]. [18-May] [Mid-July]/1938.
Charcoal on brown-based canvas. 97 x 130
cm. Private collection, Paris.

OPP.38:036; P.IV:1197; PP.38:078;
Z.IX:185; AB.06*:112; CG.12*:61;
DD.61:234; LU.93:170; LU.93:170;
UP.00:813; WS.95a*:105





Signature. Mougins. [Mid-]/1938. Ink on photograph. S/U. Private collection.

OPP.38:093

Nu debout. Mougins. 20-July/1938. Pencil and ink on paper [On the back of Hora de España sent to Picasso, Hotel Mediterráneo, Cannes]. 22 x 17,5 [18] cm. Private collection.

OPP.38:067; PP.38:128; Z.IX:183; PI.93:6





Femme dans un fauteuil (Dora Maar). Mougins. 22-July/1938. Pen & India ink on pencil outlines. 27 x 20 cm. Musée Picasso, Paris. Dation 1979.

OPP.38:053; MPP:1208; P.IV:1194; PP.38:129; Z.IX:184; MB.06*:n/a; PD.06*:270p; WS.86:175; WS.93*:31

Homme à la sucette. Mougins. 23-July/1938. Graphite pencil on cream colored wove paper. [30,5 x 23] 30,8 x 23,2 cm. The Metropolitan Museum of Art, NYC. (Inv 1999.363.68). Jacques & Natasha Gelman Collection, 1998.

OPP.38:023; P.IV:1203; PP.38:131; Z.IX:188; GT.10*:83; JR.21:174p; JR.62*:8.37; MR.94*:n/a; NY.21g*:58; NY.44c*:44; NY.89b*:207p; WS.86:177; WW.91:420p





Homme à la sucette. Mougins. 23-July/1938. Charcoal on cream wove paper. 67,5 x 44,5 cm. Private collection, New York. Formerly Christie's. #42, 05/11/92; Douglas Cooper Collection.

OPP.38:198; PP.38:130; Z.IX:187; AR.57*:54; AR.57*:54; DK.87*:74; FW.67*:198; FW.67*:198; GT.81*:85; HO.90*:79; LY.53a*:117; NY.21g*:59; PA.56a*:n/a; PA.56a*:n/a; ST.88*:199; ST.88*:199



Homme au cornet de glace. Mougins. 26-July/1938. Oil on canvas. 65 x 50 cm. Museo Picasso, Málaga. On temporary loan from Fundación Almine & Bernard Ruiz-Picasso para el Arte.

OPP.38:069; P.IV:1202; PP.38:132; Z.IX:189; CG.12*:63; DP.20*:110; GA.00*:61; MG.04b*:78; MI.01*:106



Petite fille, à la sucette, près d'une chaise (en gris).
Mougins. 27-July/1938. Oil on canvas. 61 x 46 cm. Musée
Picasso, Paris. Dation Maya Ruiz-Picasso, 2021.

OPP.38:199; MPP:2021.4; P.IV:1208; PP.38:133; Z.IX:186;
CG.12*:64; WS.94:83p; WS.95a*:117

Nature morte au chandelier. Mougins. 28-
July/1938. Oil on canvas [OIC]. 65 x 54 cm. Private
collection.

OPP.38:200; PP.38:134; Z.IX:107; DD.61:235p;
PA.44a*:n/a





Le marin. Mougins. 31-July/1938. Oil on canvas. 58,5 x 48 cm. Nationalgalerie, Museum Berggruen, Staatlichen Museen zu Berlin.

OPP.38:028; P.IV:1201; PP.38:135; Z.IX:191; BL.06*:149p;
BR.96*:55; FS.82:16p; JR.21:n/p; PD.09:336p; RK.94*:62;
UP.00:807; WR.80*:360p; WW.91:420p

Femme, chat sur une chaise et enfant sous la chaise. Mougins. 5-August/1938. Pen & India Ink on paper. 44,3 x 68 cm. Musée Picasso, Paris. Dation 1979.

OPP.38:051; MPP:1209; P.IV:1205;
PP.38:136; Z.IX:194; MA.08a*:n/a;
MB.06*:n/a; MR.13:39p; PD.06*:36-37p;
WS.86:169; WS.93*:23; WS.94:82p;
WS.95a*:116





Personnages, chat sur une chaise et enfant sous la chaise. Mougins. 5-August/1938. Pen & India ink wash. 44,5 x 67,5 cm. Private collection, New York. Formerly Victor W. Ganz Collection, NY.

OPP.38:100; P.IV:1206; PP.38:137; Z.IX:195; JR.62*:8.35

Trois nus. Mougins. 5-August/1938. Pen & India ink on paper. [44,4 x 67,5] 43,8 x 67,3 cm. Dickinson, London/New York. Formerly Christie's. #11, 2256, 11/05/08.

OPP.38:101; P.IV:1204; PP.38:138; Z.IX:192; AA.80*:n/a; DK.99*:n/a; FM.83*:n/a; HL.83*:n/a; IS.85*:n/a; KL.84*:n/a; LK.85*:n/a; NY.54e*:191; OK.82*:n/a; TT.84*:n/a; UT.79*:n/a; WM.85*:n/a





Homme au cornet de glace. Mougins. 6-August/1938. Oil on canvas. 61 x 50 cm. Catherine Hutin-Blay Collection, Paris. Formerly Jacqueline Roque Picasso Collection.

OPP.38:085; P.IV:1200; PP.38:140; Z.IX:190; PD.09:336p; UP.00:808; WR.80*:360p

L'homme au gant rouge. Mougins. 7-August/1938. Oil on paper laid down on canvas. 66 x 45,1 [45] cm. Sotheby's. #48, 05/11/94.

OPP.38:024; PP.38:139; BS.55:147





Trois femmes. Mougins. 10-August/1938. Pen & India ink on paper. 44,5 x 67,5 cm. Private collection.

OPP.38:075; PP.38:144; Z.IX:200; MR.13*:61; NY.21g*:60; SN.98*:20; WS.86:170

Figure féminine assise. Mougins. 10-August/1938. India ink on paper. 67,5 x 45 [44,5] cm. Fundación Almine & Bernard Ruiz-Picasso para el Arte.

OPP.38:135; PP.38:141; Z.IX:196; GS.03:2.32





Figure féminine assise. Mougins. 10-August/1938. Pen & India ink on paper. 67,5 x 44,5 cm. Christie's. #3, 2477, 11/01/11.

OPP.38:202; PP.38:142; Z.IX:197

Femme assise. Mougins. 10-August/1938. India ink. [67,5] 67,8 x 44,5 cm. Nationalgalerie, Museum Berggruen, Staatlichen Museen zu Berlin.

OPP.38:203; P.IV:1213; PP.38:143; Z.IX:199; BL.06*:144p





Trois femmes. Mougins. 11-August/1938. India ink on paper. 44,5 x 67,5 cm. Private collection.

OPP.38:102; PP.38:145; Z.IX:198

Homme au cornet de glace. Mougins. 14-August/1938. Oil on canvas. 61 x 50 cm. Marina Picasso Collection. (Inv 12886). Courtesy Galerie Jan Krugier, Geneva.

OPP.38:040; P.IV:1207; PP.38:147; Z.IX:206; JR.21:176p; MP.81*:201; RP.81:17.3; WW.91:416p





Composition. Mougins. 18-August/1938. India ink on paper. 44,5 x 67,5 cm. Private collection.

OPP.38:103; P.IV:1214; PP.38:148; Z.IX:201

Homme à la sucette. Mougins. 20-August/1938. Oil on paper, mounted on canvas. 68,3 x 45,4 cm. The Metropolitan Museum of Art, NYC. (Inv 1999.363.69). Jacques and Natasha Gelman Collection, 1998. Formerly Walter P. Chrysler, Jr. Collection; Edward A. Bragaline, NY.

OPP.38:104; P.IV:1210; PP.38:149; Z.IX:203;
AB.39a*:355; AB.46:218p; AB.57*:n/a; GT.10*:84;
HJ.83:28p; HJ.96:28p; JC.40:140p; JR.62*:5.17;
MR.94*:n/a; NY.53e*:14; NY.63d*:26; NY.71b*:55;
NY.89b*:208p; PH.58*:198; RI.41*:187; RP.67a:24;
SG.88:200p





La crucifixion. Mougins. 21-August/1938. Pen & India ink on paper. 44,5 x 67 cm. Musée Picasso, Paris. Dation 1979.

OPP.38:126; MPP:1210; P.IV:1216; PP.38:150; Z.IX:193; AB.05b*:172; AB.06*:111; BA.17*:143p; BM.05:70p; BM.18*:164; BP.21:827p; CR.84:141p; JC.01a*:191; JC.01b*:89; LU.93:177; MA.17*:98p; MB.06*:n/a; PP.19:72p; RJ.03:142; RP.81:18.5; TK.04*:n/a; UW.84*:57

Femme assise (Nusch Éluard). Mougins. 22-August/1938. Oil on canvas. 55 x 46 cm. Marina Picasso Collection. (Inv 12887). Courtesy Galerie Jan Krugier, Geneva.

OPP.38:127; P.IV:1215; PP.38:151; Z.IX:208; PD.02*:65





Buste de femme (Nusch Éluard). Mougins. 24-August/1938. Oil on canvas. 55 x 46 cm. Museum Sammlung Rosengart, Luzern. Siegfried & Angela Rosengart Collection.

OPP.38:065; P.IV:1220; PP.38:152; Z.IX:202;
KB.01*:124; RD.96*:46; WS.11:215p; WS.93*:29

Femme assise (Nusch Eluard). Mougins. 28-August/1938. Oil on canvas. 54,9 x 46 cm. Sotheby's. #54, 11/10/92.

OPP.38:113; P.IV:1217; PP.38:154; Z.IX:210





Buste de femme (Nusch Éluard). Mougins. 28-August/1938. Oil on canvas. 55,2 x 38 cm. Christie's. #44, 2844, 05/06/14. Formerly Christie's. #51, 11/15/88.

OPP.38:204; P.IV:1219; PP.38:153; Z.IX:207; BS.55:409p

Femme assise (Dora Maar). Mougins. 29-August/1938. Oil on canvas. 65,1 x 50,2 cm. Sotheby's. #67, 11/08/95. Formerly Norman Granz Collection, Geneva.

OPP.38:044; P.IV:1223; PP.38:155; Z.IX:211; JC.40:143p; JR.21:n/p; LP.99:165p; NY.40j*:n/a; NY.42j*:9; NY.46d*:n/a; SN.98*:21; UP.00:814; WR.80*:358p





Homme au chapeau de paille et au cornet de glace.

Mougins. 30-August/1938. Oil & enamel on canvas. 61 x 46 cm.
Musée Picasso, Paris. Dation 1979.

OPP.38:086; MPP:174; P.IV:1209; PP.38:156; Z.IX:205;
AB.05a*:108; AB.06*:109; AB.12*:209p; BA.03a*:182;
DD.61:236p; FS.82:13p; MB.06*:n/a; ME.82a*:86;
MN.80*:n/a; MP.85:152; PA.79a*:274; PD.09:337p;
RR.09*:29; SD.05*:104; SN.98*:22; SY.11*:n/a; UP.00:809;
WR.80*:360p; WW.91:416p

Homme au cornet de glace. Mougins. 30-
August/1938. Oil on paper. 65 x 50 cm. Private
collection.

OPP.38:205; P.IV:1211; PP.38:157; Z.IX:204





Femme et enfant. Mougins. 31-August/1938. Oil on canvas. 55 x 46 cm. Private collection.

OPP.38:206; P.IV:1218; PP.38:158; Z.IX:209; CG.12*:68

Buste de femme assise. Mougins. 4-September/1938. Oil on canvas. 65 x 49,5 cm. Los Angeles County Museum of Art. (Inv M.2005.70.104). Partial, fractional and promised gift of Janice and Henri Lazarof. Formerly Christie's. #15, 05/12/87.

OPP.38:207; P.IV:1221; PP.38:159; Z.IX:212; JC.40:142p





Buste de femme assise. Mougins. 6-September/1938. Oil on canvas [Oic]. 65 x 50 cm. Private collection.

OPP.38:208; P.IV:1222; PP.38:160; Z.IX:213

Tête de femme. Mougins. 6-September/1938. Oil on canvas. [55] 55,2 x 46 cm. Philadelphia Museum of Art. (Inv 2004-9-1). Gift of Muriel and Philip Berman in honor of Dr. Luther W. Brady, Jr., 2004.

OPP.38:209; PP.38:161; Z.IX:215





Femme assise. Mougins. 8-September/1938. India ink on paper. [67 x 44] 67,3 x 44.5 cm. Sotheby's. #454, 6489, 11/04/93. Formerly Christie's. #162, 7184, 11/15/90; Madame Marie Cuttoli Collection, Paris.

OPP.38:034; P.IV:1230; PP.38:168; Z.IX:226; BS.70a*:88; BS.81*:84; BS.84c*:65; BS.86a*:73; HA.59*:247; HJ.96:59p; JL.67b:72p; MN.75*:29/68; WI.71*:23

Femme assise. Mougins. 8-September/1938. Pen & India ink. 68 x 44,4 cm. Musée Picasso, Paris. Dation 1979.

OPP.38:049; MPP:1211; P.IV:1226; PP.38:164; Z.IX:221; WS.93*:20





Femme assise au chapeau. Mougins. 8-September/1938. Pen & India ink. 68 x 45,5 [44,5] cm. Musée Picasso, Paris. Dation 1979.

OPP.38:050; MPP:1212; PP.38:162; Z.IX:219; AB.06*:129; MB.06*:n/a; PD.06*:34p; WS.93*:19

Baigneuse et cabine de bains. Mougins. 8-September/1938. Brush & ink & wash on paper. 67,5 x 44,5 cm. Sotheby's. #137, L18004, 03/01/18. Formerly Sotheby's. #46, N09497, 05/09/16; Christie's. #23, 7951, 02/09/11; Russeck Gallery, Palm Beach. 2006; Sotheby's. #467, L04006, 02/04/04.

OPP.38:077; P.IV:1227; PP.38:165; Z.IX:222; AA.55*:55; BL.51*:73; DC.63:303p; DE.51*:73; DT.57*:85; DT.62*:n/a; DT.62*:n/a; DT.72*:n/a; IU.71*:112; NY.73f*:83; NY.75a*:83





Buste de femme (Dora Maar). Mougins. 8-September/1938. Pen & ink on paper. 67,5 x 44,5 cm. Sotheby's. #14, N09740, 11/14/17. Formerly Mrs. Meric Gallery.

OPP.38:210; P.IV:1225; PP.38:163; Z.IX:220; AB.39a*:357; AB.46:218p

Femme assise par terre. Mougins. 8-September/1938. India ink. 67,5 x 44,5 cm. Private collection.

OPP.38:211; P.IV:1228; PP.38:166; Z.IX:223





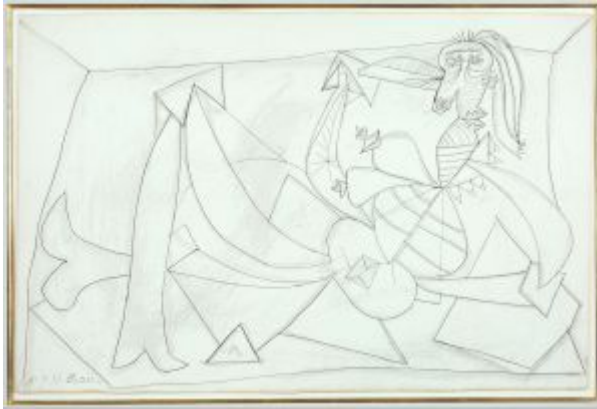
Deux femmes assises. Mougins. 8-September/1938. India ink on paper. 67,6 x 44,5 cm. Sotheby's. #455, 6489, 11/04/93.

OPP.38:212; P.IV:1229; PP.38:167; Z.IX:225; NH.43*:n/a; NS.61*:n/a; NY.52q*:n/a; NY.71i*:n/a; NY.73h*:n/a; NY.77a*:109; OW.64*:n/a; PK.54*:4p; TO.49*:54; WR.72*:154p

Femme au chapeau, assise sur une chaise (Dora Maar). Mougins. 10-September/1938. Oil & sand on thin wood panel. 54,9 x 46 cm. The Menil Family Collection, Houston. Gift of Dominique de Menil.

OPP.38:060; P.IV:1224; PP.38:171; Z.IX:228; AS.60:50; BS.55:83p; EC.02:587; HO.16a:167p; JR.21:177p; JS.46:20; PD.09:335p; PH.96:21; UP.00:815; WR.80*:346p; WR.96:394p; WS.11:211p; WS.93*:27; WW.94*:137; YC.05:81p





Nu allongé. Mougins. 10-September/1938. India ink & gouache on paper, mounted on cardboard. 44,5 x 67,7 cm. Museum Ludwig, Köln. (Inv ML/Z 2001/053). Schenkung 2001. Formerly Galerie Zwirner, Köln; Mr & Mrs Lester Francis Avnet, NY; Galerie Berggruen, Paris.

OPP.38:074; PP.38:169; Z.IX:224;
HO.16a*:105p; LC.92:38; LU.93:290;
WO.92*:38; WR.72*:155p

Tête de femme. Mougins. 10-September/1938. Oil on canvas. 58 x 38 cm. Marina Picasso Collection. (Inv 12892). Courtesy Galerie Jan Krugier, Geneva.

OPP.38:214; PP.38:170; Z.IX:214; LM.06*:10





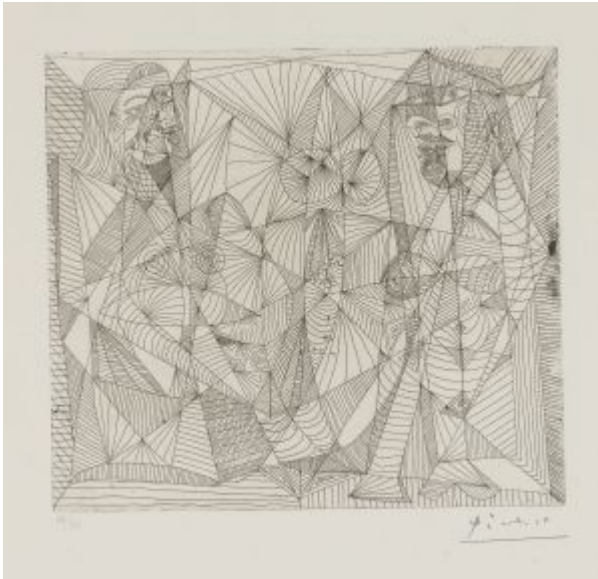
Tête de femme aux narines vertes sur fond bleu-nuit (Dora Maar). Mougins. [14-August] 14-September/1938. Oil on canvas. 65 x 50 cm. Private collection.

OPP.38:045; P.IV:1212; PP.38:146; Z.IX:216; BA.03a*:184; DD.61:235p; LE.07*:52; MG.03b*:36; NM.95:26p; UP.00:800; WR.96:395p

La première neige. [Paris]. Fall/1938. Pastel on canvas. 29 x 19 cm. Maya Widmaier Picasso Collection, Paris.

OPP.38:011; P.IV:1250; PP.38:191; AC.81:53p; DD.61:154p; OW.13:169p; PD.65:174p; RP.11*:214p; WS.95a*:107





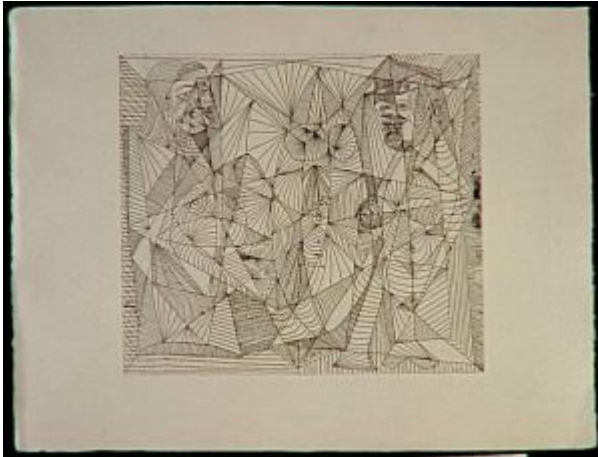
Deux femmes assises (Luc Decaunes, L'indicatif présent ou l'infirmes tel qu'il est. Poèmes). Paris. Fall/1938. Etching, edition 50. [24,7 x 27,7] 24,8 x 27,6 cm. Christie's. #176, 2309, 04/26/10.

OPP.38:253; B.I:309; Ba:645.Bd; P.IV:1244

Deux femmes assises. Paris. Fall/1938. Etching. 24,6 x 27,9 cm. Musée Picasso, Paris. Dation 1979.

OPP.38:378; Ba:645.B; MPP:1990.122





Deux femmes assises. Paris. Fall/1938. Etching.
24,8 x 27,7 cm. Musée Picasso, Paris. Dation
1979.

OPP.38:380; Ba:645; MPP:2787

Deux femmes à l'ombrelle. Paris. 8-
October/1938. Pen, India ink & blue ink.
[45 x 53,5] [45,5 x 68] 44 x 54 cm. Musée
Picasso, Paris. Dation 1979.

OPP.38:052; MPP:1213; P.IV:1238;
PP.38:172; Z.IX:227; BA.03a*:181;
EC.02:585; GD.77:56p; MB.06*:n/a;
MN.80*:n/a; SP.04*:n/a; UP.00:811;
WR.80*:355p; WS.93*:24





Marie-Thérèse, Maya et Kazbek. Le Tremblay-sur-Mauldre. 8-October/1938. India ink on Arches card. 40,5 x 54,5 cm. Private collection.

OPP.38:215; P.IV:1241; PP.38:173; Z.IX:231; RP.11:75p

Trois femmes (Étude). [Le Tremblay-sur-Mauldre]. 10-October/1938. Brush & pen & India ink on paper. 24 x 45 cm. Christie's. #114, 3443, 11/05/13. Formerly Marina Picasso Collection. (Inv 04055).

OPP.38:216; PP.38:174; MP.81*:203





Carte postale adressée à Vladimir Polunin (Amitiés et bon souvenirs). Paris. 14-October/1938. Pen & ink on printed postcard. 10,5 x 15 cm. Sotheby's. #366, L20004, 02/05/20.

OPP.38:092

Portrait de Maya et de sa mère. [Le Tremblay-sur-Mauldre]. 15-October/1938. India ink on paper. [50,8] 50,5 x 36,5 cm. Private collection.

OPP.38:217; P.IV:1061; PP.38:175; Z.IX:230; RP.11*:215p





Nature morte aux couverts. [Le Tremblay-sur-Mauldre]. 16-October/1938. Oil on canvas [OIC]. 60 x 73 cm. Private collection.

OPP.38:218; P.IV:1243; PP.38:176; Z.IX:234

Tête de femme. [Le Tremblay-sur-Mauldre]. 18-October/1938. Pencil. 24,3 x 45,3 cm. Musée Picasso, Paris. Dation 1979.

OPP.38:058; MPP:1214; P.IV:1254; PP.38:177; MB.06*:n/a; WS.93*:45





Femme nue couchée. [Le Tremblay-sur-Mauldre]. 18-October/1938. Pen & India ink, wash & colored pencil on paper. 24,4 x 45,5 cm. Christie's. #414, 21032, 06/29/22.

OPP.38:290; MG.04b*:77

Buste de femme à la chaise (Dora Maar) (I). Paris. 18-October/1938. Etching. 24,4 x 14 cm. Musée Picasso, Paris. Dation 1979.

OPP.38:379; Ba:643.1; MPP:2780





Buste de femme. Paris. 20-October/1938. Copper plate. 24,8 x 13,8 cm. Musée Picasso, Paris. Don des héritiers Picasso en 1982.

OPP.38:296; MPP:1982.53r

Buste de femme. Paris. 20-October/1938. Copper plate. 24,8 x 13,8 cm. Musée Picasso, Paris.

OPP.38:297; MPP:1982.53v





Nature morte: fruits, compotier, carafe sur une table. [Le Tremblay-sur-Mauldre]. 22-October/1938. Oil on canvas. 60 x 73 cm. Sotheby's. #23, N08633, 05/05/10. Formerly Justin K. Thannhauser Collection; Vladimir Goldschmann Collection, New York.

OPP.38:219; P.IV:1242; PP.38:178; Z.IX:233; PI.39*:n/a

Nature morte au compotier et au verre. [Le Tremblay-sur-Mauldre]. 22-October//1938. Oil on canvas. 65,1 x 81,3 cm. The Detroit Institute of Arts. (Inv 1988.178). Bequest of W. Hawkins Ferry.

OPP.38:252





Fille au bateau. [Le Tremblay-sur-Mauldre]. 29-October/1938. Oil on canvas. 92 x 73 cm. Private collection.

OPP.38:220; P.IV:1240; PP.38:179; DD.61:236p

Portrait de femme assise. Paris. 1-November/1938. Oil on canvas. 55 x 46 cm. The Bellagio Gallery of Fine Art, Las Vegas.

OPP.38:221; PP.38:180; DD.61:236p; LV.15*:n/a





Femme debout. Paris. 1-November/1938. India ink & gouache [OIC]. 45,5 x 24,3 cm. Private collection.

OPP.38:222; PP.38:180a; GP.66:101

Palette, chandelier et tête de Minotaure.

Le Tremblay-sur-Mauldre. 4-November/1938. Oil on canvas. 73,7 x 90,2 cm. National Museum of Modern Art, Kyoto. (Inv B.103; O00101).

OPP.38:038; P.IV:1245; Z.IX:235;
AB.06*:174; DP.20:250p; GP.96:231p;
JB.92*:100; JR.21:n/p; KO.87*:135;
LU.93:195p; MF.01*:32; PE.00*:66;
SF.48b*:n/a; SH.90*:1-20; SN.98*:23;
TO.04*:39; TO.14*:63; TS.90*:P33;
TT.89*:9; YO.90b*:23





Nature morte avec bougie, palette et tête de taureau noir. [Le Tremblay-sur-Mauldre]. 19-November/1938. Oil on canvas. 97,2 x 129,5 cm. Menard Art Museum, Komaki City, Aichi, Japan. Formerly Colonel Valdemar Ebbesen Collection, Saint Jean-de-Gonville.

OPP.38:009; P.IV:1246; PP.38:183; Z.IX:240; AB.46:217p; AB.57*:n/a; AC.81:124p; BS.55:146; DP.20:250p; GC.96:235p; GD.77:57p; JB.92:254p; LU.93:532p; MF.01:47p; MI.53*:78; MM.67:45; MR.53:102p; ON.66:33p; PA.44a*:n/a; RP.60*:155; SN.98*:24; TO.04*:40; UA.80:8; UP.00:823; WW.91:419p

Portrait de Maya. [Le Tremblay-sur-Mauldre]. 19-November/1938. Pencil. 20,5 x 17 cm. Private collection.

OPP.38:223; P.IV:1252; PP.38:181; Z.IX:229





Nature morte: Bougie, palette, tête de taureau rouge. [Le Tremblay-sur-Mauldre]. 26-November/1938. Oil & Ripolin on canvas. 97,8 x 129,5 cm. The Arkansas Arts Center, Little Rock, AR. Formerly The Museum of Modern Art, NYC. Gift of Mr. & Mrs. William A. M. Burden, NY.

OPP.38:001; P.IV:1248; PP.38:182; Z.IX:239; AB.57*:n/a; DP.20:250p; EM.55:185p; GB.87:197; GP.96:234p; HR.89:34p; JB.92*:101; KS.62:38; LU.93:197p; MF.01:48p; MI.53*:79; MJ.55*:93; MN.75*:69; PD.65:172p; PH.58*:200; RO.53*:39; RP.81:18.2; SD.81*:n/a; SG.88*:1; TH.75:182; TK.77a*:48; WR.72*:153p; WR.80*:362p; WW.91:418p

Nature morte au Minotaure et à la palette. [Le Tremblay-sur-Mauldre]. 27-November/1938. Oil on canvas. 73 x 92,7 [92] cm. Museo Picasso, Málaga. On temporary loan from Fundación Almine & Bernard Ruiz-Picasso para el Arte.

OPP.38:010; P.IV:1249; PP.38:184; DD.61:155p; DP.20*:111; JB.92:256p; JR.14*:181p; JR.21:179p; LU.93:180; MF.01*:33; WW.91:419p





enfonçant ses dents dans la plaie l'architecture du désir / déploie ses ailes ...; torche chaise laissée ...; ciel ciel ciel ciel Paris. 28-November/1938. Typescript on paper. 27,2 x 21,1 cm. Musée Picasso, Paris.

OPP.38:340; MPP:3663.260.01r

enfonçant ses dents dans la plaie l'architecture du désir / déploie ses ailes ...; torche chaise laissée ...; ciel ciel ciel ciel Paris. 28-November/1938. Typescript on paper. 27,2 x 21,1 cm. Musée Picasso, Paris.

OPP.38:341; MPP:3663.260.03r





enfonçant ses dents dans la plaie l'architecture du désir / déploie ses ailes ...; torche chaise laissée ...; ciel ciel ciel Paris. 28-November/1938. Typescript on paper. 27,2 x 21,1 cm. Musée Picasso, Paris.

OPP.38:342; MPP:3663.260.05r

Dora aux cheveux défaits. Paris. 1-December/1938. Pencil. 67,5 x 44,5 cm. Nationalgalerie, Museum Berggruen, Staatlichen Museen zu Berlin. Formerly Dora Maar Collection.

OPP.38:224; PP.38:185; Z.IX:175; BL.06*:141p; PA.98d*:18





Lettre manuscrite à Max Pellequer. Paris. 2-December/1938. Ink on paper. S/U. Piasa. #40, 2142, 02/15/24. Formerly Max Pellequer Collection.

OPP.38:387

Nature morte à la palette et tête de taureau. Paris. [10-February] 10-December/1938. Oil & black ink on canvas. 73,5 x 92,1 cm. Sotheby's. #18, PF1306, 06/06/13. Formerly Marina Picasso Collection. (Inv 12844).

OPP.38:035; P.IV:1247; PP.38:189; CP.95:47p; DD.61:236p; DP.20:250p; GS.85*:78; JB.92:256p; JB.92:256p; JC.01b*:76; LO.94*:n/a; LU.93:181; MB.84*:115; MF.01*:34; MF.10*:149p; TK.86*:PM-14; VC.05*:n/a





Portrait de Dora dans un jardin. Paris. 10-December/1938. Oil on canvas. 131 x 97 cm. Abigail and Leslie H. Wexner Collection. Formerly Sotheby's. #10, NY7382, 11/10/99; Mr. & Mrs. Daniel Saidenberg Collection; Mrs. Meric Gallery Collection.

OPP.38:046; P.IV:1255; PP.38:188; Z.IX:232; AB.46:221p; AM.67*:86; EC.02:588; JL.66*:183; JR.62*:5.19; MC.00:124p; NY.40k*:n/a; NY.45a*:17; NY.48a*:n/a; NY.65e*:10; NY.71b*:56; NY.75b*:n/a; PD.09:335p; PH.45a*:n/a; PI.03:23; RP.81:18.1; UP.00:818; WR.80*:359p; WR.96*:397p; WW.91:423p; YB.99*:114

Buste de femme (Marie-Thérèse Walter). Paris. 11-December/1938. Oil on canvas. 46 x 38 cm. Helly Nahmad Collection, Monaco/London. Formerly Galerie Louise Leiris, Paris.

OPP.38:072; P.IV:1253; PP.38:190; DD.61:236p; FM.00:11p; LO.98b*:n/a; NG.98:27; RT.99*:36





Le faisan. Paris. 13-December/1938. Oil on canvas. 54 x 65 cm. The Albertina, Vienna. (Inv GE217DL). Herbert Batliner Collection, Vaduz, Liechtenstein.

OPP.38:369

Un ensemble de trois dessins: Nu d'homme. Paris. 20-December/1938. Pencil on pack of cigarettes. 40 x 49 cm. Private collection. Formerly Dora Maar Collection.

OPP.38:384; PA.98d*:43



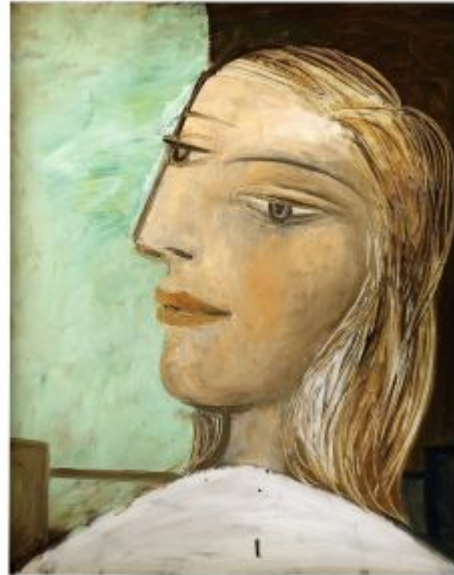


Portrait de femme (Dora Maar). Paris. [Winter/1937]
Winter/1938-1939. Oil on canvas. 98 x 77,5 cm. Musée
National d'Art Moderne, Centre Georges Pompidou, Paris. (Inv
AM.2729.P), Picasso Dation,1947.

OPP.38:008; P.IV:1168; PP.38:197; Z.IX:134; AB.06*:119;
GP.96:232p; PD.65:175p; TV.06:243p; UP.00:805

Femme assise (Marie-Thérèse Walter). Paris.
Winter/1938~1939. Oil on canvas. 73 x 60 cm. Private
collection.

OPP.38:233; PP.38:196; DD.61:237p; MG.13*:73p





Scène de plage. Paris. 24-December/1938. Pen, ink & pencil on opened out cardboard box. 15,3 x 12 cm. Musée Picasso, Paris. Dation 1979.

OPP.38:227; MPP:1215.r; PP.38:192

Paysage. Paris. 24-December/1938 [Winter/1938~1939]. Pen, ink & pencil on opened out cardboard box. 15,3 x 12 cm. Musée Picasso, Paris. Dation 1979.

OPP.38:228; MPP:1215.v; PP.38:193





Sabartés en costume d'époque II. Paris. 25-December/1938. Graphite pencil on paper [Obverse]. 29 x 21 cm. Museu Picasso, Barcelona. Sabartés Collection.

OPP.38:229; MPB:70.231; P.IV:1256; PP.38:193a;
BA.19c*:121p; EC.16*:140; JR.21:181p; JS.48:148p;
TO.04*:43; TO.97*:n/a

Femme allongée (Dora Maar). Paris. 26-December/1938. Pen & black ink & wash on paper. [27,2 x 35,4] 27,2 x 35,2 cm. Christie's. #571, 22612, 05/18/24. Formerly E & R Cyzer Fine Art, London; Christie's. #641, 7356, 02/08/07.

OPP.38:144





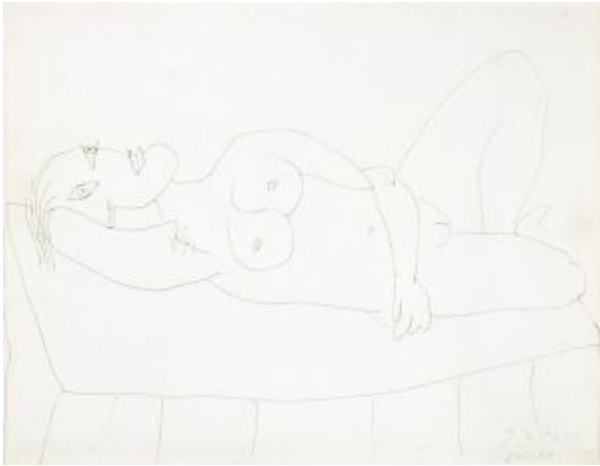
Sabartés en habit de moine. Paris. 26-December/1938 [Winter/1938~1939]. Pencil. 36 x 27 cm. Museu Picasso, Barcelona.

OPP.38:230; MPB:70.229; P.IV:1257; PP.38:193b; FG.64:174p; JS.48:152p; TO.97*:A6

Sabartés en costume d'époque. Paris. 26-December/1938. Pencil. 36 x 27 cm. Museu Picasso, Barcelona.

OPP.38:231; MPB:70.230; P.IV:1259; PP.38:193c; JS.48:156p; TO.97*:A5





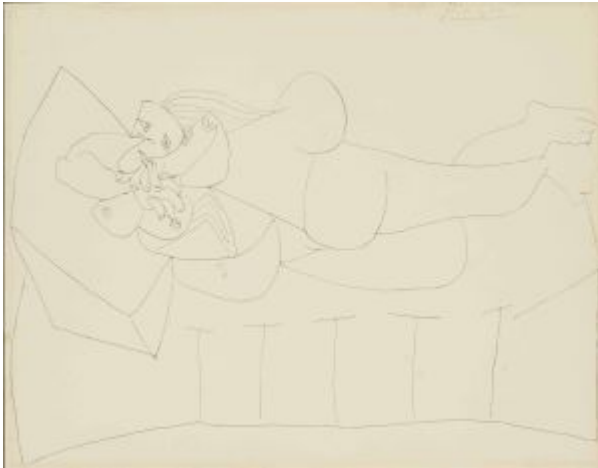
Dora Maar nue allongée. Paris. 27-December/1938. Pen & ink on paper. 27 x 32,2 cm. Sotheby's. #147, L06009, 06/20/06.

OPP.38:133

Nu couché. Paris. 27-December//1938. Pen & ink on paper. 27,1 x 35,2 cm. The Cleveland Museum of Art. (Inv 1963.151). Contemporary Collection of The Cleveland Museum of Art.

OPP.38:258; NY.21g*:61





Nu allongé (Dora Maar). Paris. 27-December/1938. Pen & ink on paper. 27 x 35 cm. Christie's. #109, 14240, 06/28/17.

OPP.38:289; MI.94*:72; TR.66*:10

Adora. Paris. 28-December/1938. Pen & ink on paper. [27 x 35] 27,2 x 35,3 cm. Sotheby's. #287, L10007, 06/23/10. Formerly Galerie Pels-Leusden, Zürich; Dora Maar Collection.

OPP.38:033; JC.01a*:192; MC.00:87p; PA.98d*:81





Femme couchée (Dora Maar). Paris. 28-December/1938. India ink & gouache on paper. 26 x 34 cm. The National Gallery, London. On loan from Museum Berggruen, Berlin.

OPP.38:056; BL.06*:157p; BR.96*:58;
LU.93:175; RK.94*:61; WS.93*:36

Nu allongé III. Paris. 28-December/1938. Watercolor, brown ink, wax crayon & India ink on paper. 27,1 x 35,2 cm. Thomas Ammann Fine Art, Zürich. Formerly Sotheby's. #21, L14002, 02/05/14; Christie's. #6, 5517, 05/21/08.

OPP.38:226; NY.21g*:62





Nu allongé. Paris. 28-December/1938. India ink on paper. 25,7 x 33,8 cm. Nationalgalerie, Museum Berggruen, Staatlichen Museen zu Berlin. Formerly Heinz Berggruen Collection.

OPP.38:288; BL.06*:156p

Buste de femme accoudée. Paris. 31-December/1938. Oil on canvas. 61 x 50 cm. Sotheby's. #112, L22002, 03/02/22. Formerly Fundación Almine & Bernard Ruiz-Picasso para el Arte.

OPP.38:068; P.IV:1258; PP.38:194; CG.12*:66; DD.61:237p; GA.00*:62; MG.03b*:37; MI.01*:105; NC.17*:88





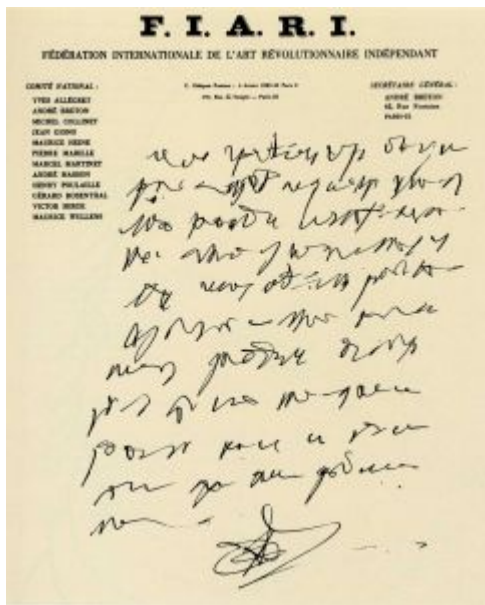
Femme assise accoudée. Paris. 31-December/1938. Oil on canvas. 55 x 46 cm. Marina Picasso Collection. (Inv 12899). Courtesy Galerie Jan Krugier, Geneva.

OPP.38:232; P.IV:1264; PP.38:195; DD.61:237p; KB.99*:17; PD.02*:71; TO.04*:34

Equipage. Paris. [1938]. Pencil & collage on paper. 16,8 x 21,6 cm. Christie's. #96, 1698, 09/14/06. Formerly Juan Larrea Collection.

OPP.38:136





Écriture de mots inconnus. Paris. 1938. Ink on paper. 26,6 x 20,6 cm. Musée Picasso, Paris.

OPP.38:143; MPP:2003.5(2); AB.05a:93; BP.21:299p; CW.89:198p

Tête. Paris. 1938. Peble on wax stand [Oic]. 5 x 3,5 cm. Private collection.

OPP.38:169; PP.38:199; WS:180.A





Tête. Paris. 1938. Pebble on a plasticine base. 5 x 3,8 cm. Sotheby's. #606, L16005, 02/05/16. Formerly Marina Picasso Collection.

OPP.38:201; PP.38:200; WS:180.B

Tête de femme, profil droit. Paris. [1938].
Fragment of a plate engraved [OïC]. S/U. Private collection.

OPP.38:213; PP.38:198; WS:180



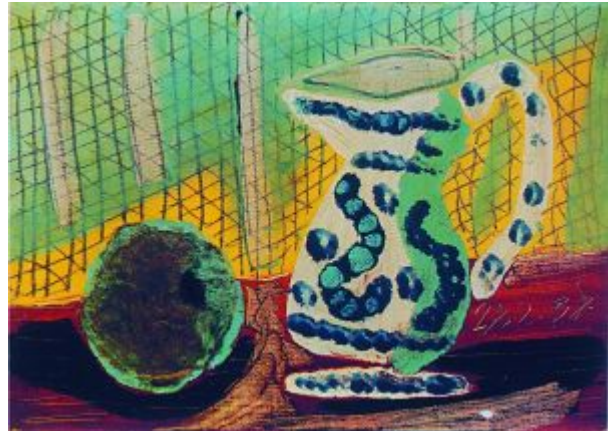


Visage cubiste de profil. Paris. [1938]. Black ink on cardboard cut-out. 6 x 3,5 cm. Artcurial. #428, 1765, 11/03/09. Formerly Inès Sassier Collection.

OPP.38:251

Nature morte à la pomme et au pichet.
Paris. 1938. Oil on canvas. 19 x 24 cm.
Private collection.

OPP.38:262; P.IV:1129





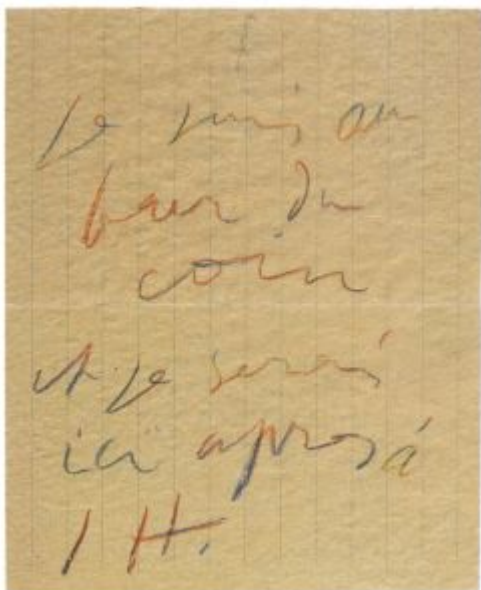
Sang de Picasso. Paris. [1938]. Blood on paper. S/U. Musée Picasso, Paris. Dora Maar Collection.

OPP.38:269; AB.06:I.3

Pliage. Paris. [1938]. Cut & folded paper with ink highlights. 3,2 x 3,7 cm. Musée Picasso, Paris. Dora Maar Collection.

OPP.38:270; MPP:1998.36; AB.06:I:4



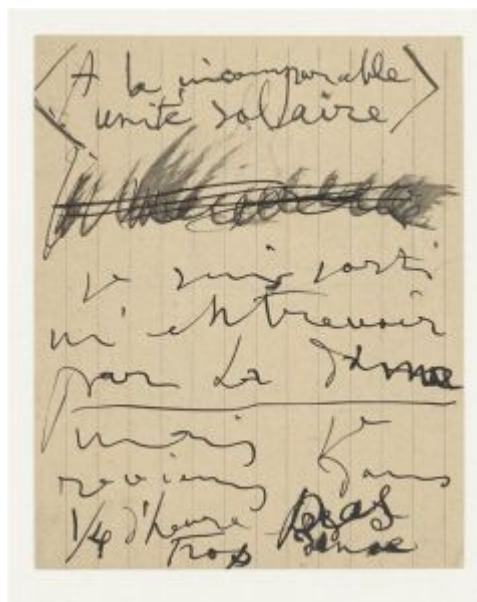


Message manuscrit autographe: 'Je suis au bar du coin et je serais ici après à 1 H ...'. Paris. [1938]. Color pencil on lined paper. 13 x 10,3 cm. Musée Picasso, Paris. Dora Maar Collection.

OPP.38:271; MPP:1998.70; AB.06:I.9

Message manuscrit autographe: 'À la incomparable unité solaire ...'. Paris. [1938]. Black ink on lined paper [Obverse of *Message manuscrit autographe: 'A la incomparable unité solaire ...'*]. 12,8 x 10,4 cm. Musée Picasso, Paris. Dora Maar Collection.

OPP.38:272; MPP:1998.65r; AB.06:I.12



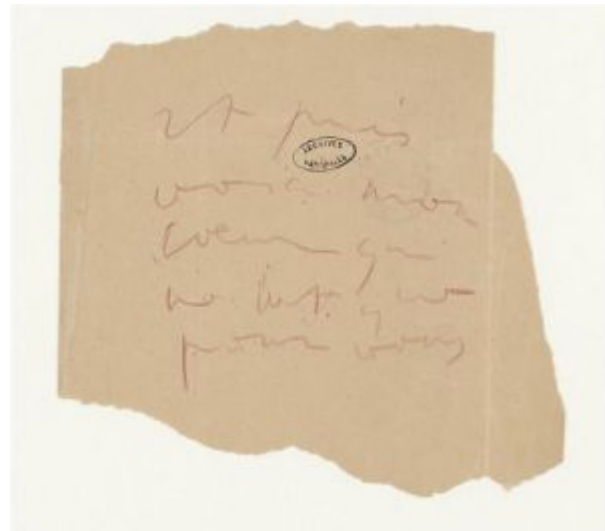


Message manuscrit autographe: 'Ses grosses cuisses, ses seins, ses hanches ...'. Paris. [1938]. Black ink & blue pencil on paper. S/U. Musée Picasso, Paris. Dora Maar Collection.

OPP.38:273; MPP:1998.56; AB.06.I:13

Message manuscrit autographe: 'Et puis voici mon cœur que ne bat que pour vous'. Paris. [1938]. Red pencil on paper. 15,5 x 16,5 cm. Musée Picasso, Paris. Dora Maar Collection.

OPP.38:274; MPP:1998.37.v; AB.06.I.14



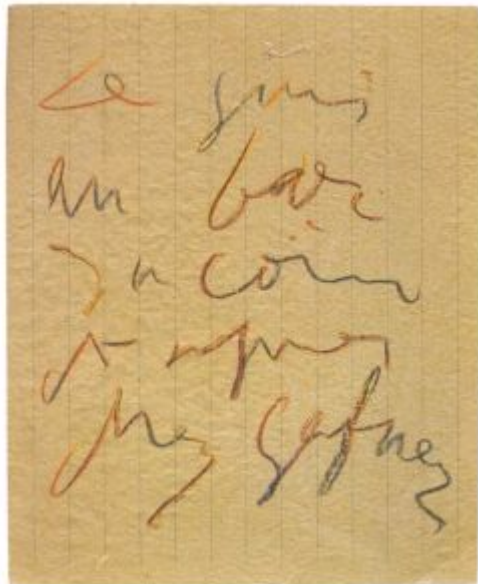


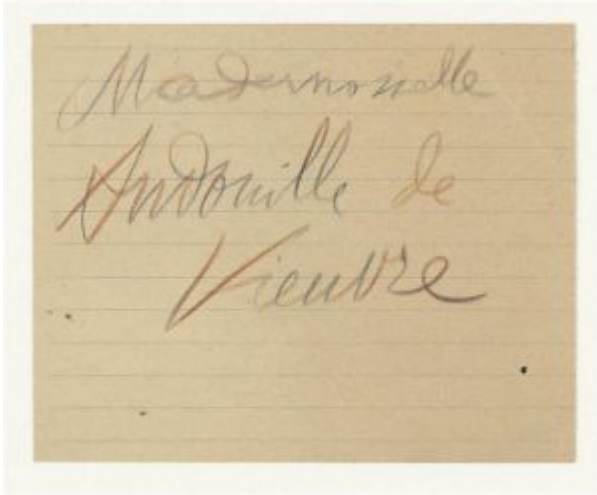
Message manuscrit autographe: 'Je suis venu je suis parti ...'. Paris. [1938]. Rainbow-colored pencils on paper. S/U. Musée Picasso, Paris. Dora Maar Collection.

OPP.38:275; AB.06:I.15

Message manuscrit autographe: 'Je suis au bar du coin et après chez Gafner'. Paris. [1938]. Rainbow-colored pencils on lined paper. 13 x 10,3 cm. Musée Picasso, Paris. Dora Maar Collection.

OPP.38:276; MPP:1998.69; AB.06:I.18



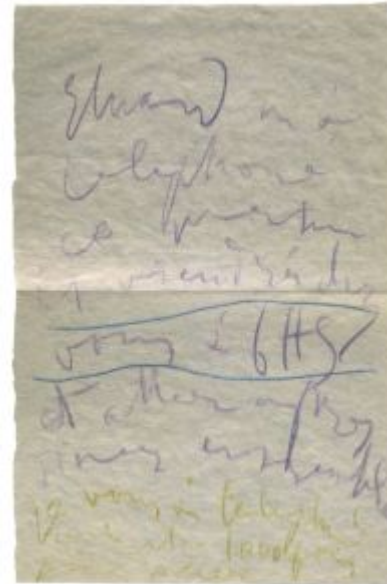


Message manuscrit autographe: 'Mademoiselle Andouille ...'. Paris. [1938]. Rainbow-colored pencil on lined paper. 10,3 x 13 cm. Musée Picasso, Paris. Dora Maar Collection.

OPP.38:277; MPP:1998.68; AB.06:I.19

Message manuscrit autographe: 'Éluard m'a téléphoné'. Paris. [1938]. Rainbow-colored pencil on paper. S/U. Musée Picasso, Paris. Dora Maar Collection.

OPP.38:278; AB.06:I.20



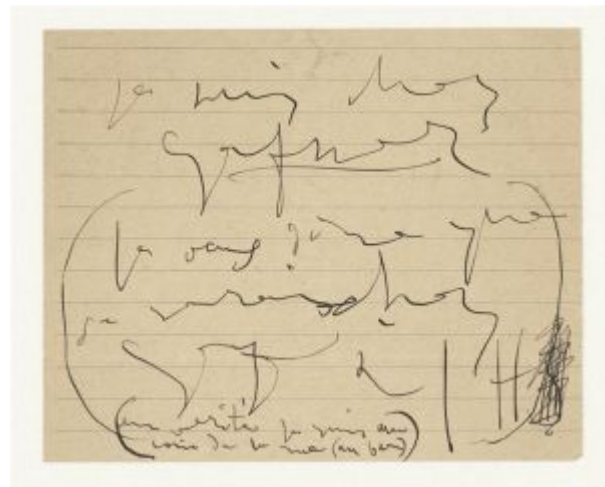


Mot autographe à Dora Maar: 'Adora, je serai à 1h chez Lipp'. Paris. [1938]. Colored pencils on paper. 27 x 21 cm. Musée Picasso, Paris. Dora Maar Collection.

OPP.38:279; MPP:1998.419r; AB.06:I:16

Message manuscrit autographe: 'Je suis chez Gafner'. Paris. [1938]. Black ink on lined paper. S/U. Musée Picasso, Paris. Dora Maar Collection.

OPP.38:280; MPP:1998.67; AB.06:I.17





Signatures. Paris. [1938]. Red ink on vellum.
S/U. Musée Picasso, Paris. Dora Maar Collection.

OPP.38:281; MPP:1998.86; AB.06:I.10

Femme à la collerette. Paris. 1938. Wool
tapestry [After *Femme à la collerette (Marie-
Thérèse)*]. 210,3 x 184 cm. Christie's. #5,
10393, 02/06/15.

OPP.38:286





Mot autographe de l'artiste à Dora Maar. Paris. 1938. Color pencil on paper [Reverse of *Message manuscrit autographe*: 'Et puis voici mon cœur que ne bat que pour vous']. 15,5 x 16,5 cm. Musée Picasso, Paris.

OPP.38:366; MPP:1998.37.r

Enveloppe autographe à Dora Maar. Paris. [1938]. Ink on envelope [Obverse of *Enveloppe autographe à Dora Maar*]. 11,3 x 14,2 cm. Musée Picasso, Paris.

OPP.38:373; MPP:1998.80v



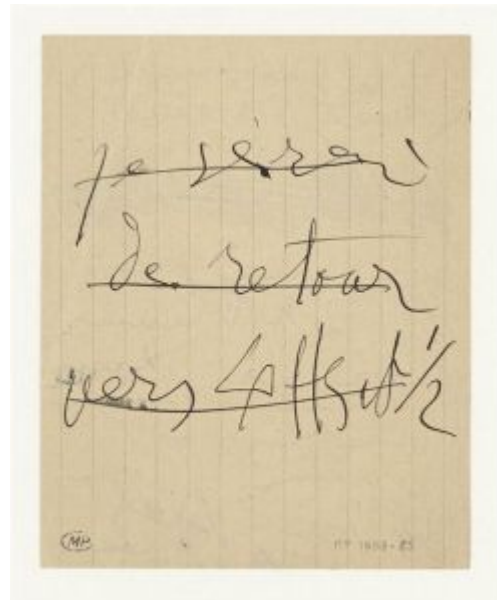


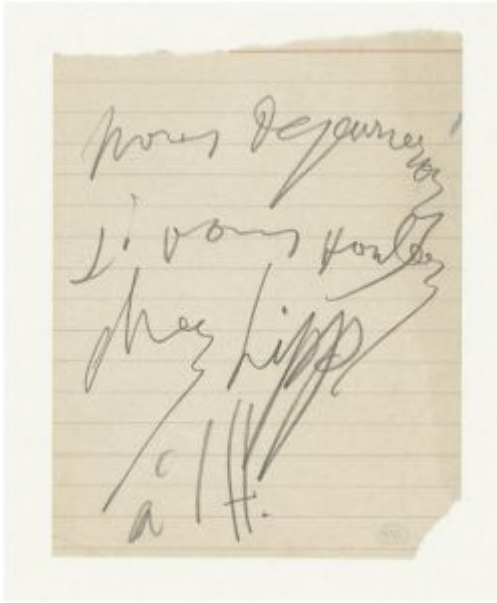
Enveloppe autographe à Dora Maar. Paris. [1938]. Ink on envelope [Obverse of *Enveloppe autographe à Dora Maar*]. 11,3 x 14,2 cm. Musée Picasso, Paris.

OPP.38:374; MPP:1998.80r

Message manuscrit autographe: 'A la incomparable unité solaire ...' Paris. [1938]. Black ink on paper [Reverse of *Message manuscrit autographe: 'A la incomparable unité solaire ...'*]. 12,8 x 10,4 cm. Musée Picasso, Paris.

OPP.38:375; MPP:1998.65v





Message manuscrit autographe: 'Nous déjeunerons si vous voulez chez Lipp ...'. Paris. [1938]. Graphite on paper. 13,2 x 10,2 cm. Musée Picasso, Paris.

OPP.38:376; MPP:1998.66r

Portrait de femme (Dora Maar). Paris. 1938. Charcoal on paper. 76,2 x 56,5 cm. Private collection. Courtesy Acquavella Galleries.

OPP.38:377; NY.21g*:53





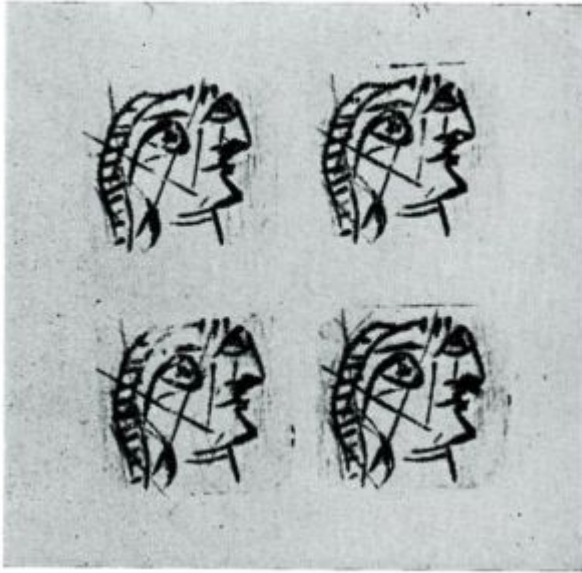
Un ensemble de trois dessins: Étude de femme oiseau. Paris. [1938]. Pencil on paper. 40 x 49 cm. Private collection. Formerly Dora Maar Collection.

OPP.38:383; PA.98d*:43

Un ensemble de trois dessins: Autoportrait. Paris. [1938]. Pencil on menu. 40 x 49 cm. Private collection. Formerly Dora Maar Collection.

OPP.38:385; PA.98d*:43





Tête de profil. Paris. 1938. Etching. 9 x 5,5 cm.
Private collection.

OPP.38:388; B.I:1334

Homme nu debout avec un cheval.
Paris. 1938. Drypoints [Scored version of
Homme nu debout avec un cheval]. 33,6 x
44,4 cm. Sotheby's. #129, L19164,
10/17/19.

OPP.38:389





Tête de femme à double profil. Paris. [1938~1941]. Pencil on invitation card. 13,5 x 10,2 cm. Musée Picasso, Paris. Dation 1979.

OPP.38:225; MPP:1239; PP.38:186; Z.IX:278; GB.19*:25